



## Korg Prologue Ctrlr panel documentation and instructions

V2.0- 2021-04-05



## Introduction

Hi! Thanks for having purchased this Ctrlr Korg Prologue panel!

The panel is an editor and librarian for the Korg Prologue and covers all parameters at program level and for the two timbres (main and sub). There are many parameters to cover (39 at program level then close to 80 for each of the timbres) and this explains why the panel is looking quite dense.

The layout chosen offers the advantage of presenting you both main and sub timbres in parallel so you can directly see the differences between them.

It also handles the Global parameters but not yet the Livesets.

Unfortunately, Korg has chosen the CC method to send parameter changes to/from the synth instead of NRPN messages. This is limiting the direct communication with the synthesizer to a maximum of 127 parameters with a range of value 0-127 max. Full program dumps must be manually sent in order to modify the parameters not covered by CC messages (appearing in light green on the panel) and modifying those parameters on the synth will not be reflected directly on the panel. You can use the small Send buttons at different places to make this a breeze and to hear the effect of your change.

Besides the editor, you will also benefit from a complete librarian. It will allow you to manage an image of the content of your Prologue but also two “disk” banks that are banks only on your PC. From there you are able to perform different program operations between the banks (copy, swap, init and move).

The librarian is going further! It will also allow you to perform similar operations with timbres and, not the least, you will be able to give names to your timbres, store a description of the programs, the author name and the date. The last tab allows you to list the parameters of programs or timbres, to compare them, to compare saved and current values...

The panel has a look and feel close to the one of the Prologue but, it would be stupid to not benefit of the computer possibilities. Therefore, you also get a display of the current and saved parameters value, the description of each parameter as in manual and a graphic display of the envelopes.

From version 2.0, the panel is also reading and writing Korg Librarian files (.prlgprog; not .prlglib) but can also read and convert Minilogue XD files (sysex and .mnlxdprog). It is also possible to write Minilogue XD files (sysex only at the moment).

Despite careful testing, it is possible that some bugs remain. Please contact [sunny.synths@gmail.com](mailto:sunny.synths@gmail.com) if you find one so they can be corrected as soon as possible.

In the same spirit, contact [sunny.synths@gmail.com](mailto:sunny.synths@gmail.com) if you would like some enhancements.

By that, please have a look on this manual to have an idea of the way of using it and its features. Enjoy making music with your Korg Prologue and have fun!

Many thanks to Bryce for his remarks and test of this panel ;-)

*Sunny Synths*

## About this v2.0 version

The version 2.0 brings the following changes:

- Scale key, Program transpose and tuning help texts corrected
- Global settings Master and Transpose values corrected
- Last chord Maj7b5 text corrected
- Adapted to prevent multiple popups in DAW. This is now allowing to have several tracks easily and to use DAW presets (but it is still better to use the main Load/Save buttons)
- Added switch to activate/disable Receive confirmation popups
- Added switch to activate/disable Load confirmation popups
- Added switch to activate/disable Save confirmation popups
- Added bank rotary to select a 0-4 bank
- Modified program rotary to select 0-100 instead of 0-500
- Added Direct mode to change the program on the Prologue
- Modified behavior of Receive button
- Added timbre operation 'Copy source timbre to Main'
- Added timbre operation 'Copy source timbre to Sub'
- Added timbre operation 'Copy destination timbre to Main'
- Added timbre operation 'Copy destination timbre to Sub'
- Added switch to select Save format (Sysex, Librarian, Both)
- Added Save as Korg Librarian format
- Added Load Prologue program in Korg Librarian format
- Added Load Minilogue XD program in Korg Librarian format
- Added support to Midi global channels 1-16
- Minilogue conversion improvements (Joystick, Voice depth...)

## Information for the users of a previous version

As one image has been replaced by a new one in v2.0, **you need to delete the existing temporary “Korg Prologue” folder so that it will be replaced by the new one.**

You may have to redo your Midi settings so take note of them before deleting the folder (or copy the Korg Prologue.settings file to a safe place and put it back when the temp directory is recreated).

On Windows, the temporary folder **Korg Prologue** is located in the normally hidden directory **C:\Users\your\_username\AppData\Roaming**. You can display the AppData folder by selecting to display the hidden elements in the Windows Explorer ribbon under Display.

On MacOS, the temporary folder **Korg Prologue** is located in your personal Library/Preferences folder. This is also a hidden folder that you can see/reach by using the Finder and clicking on Go while pressing the Option (Alt) key.

## Table of Contents

<b>Introduction.....</b>	<b>2</b>
<b>About this v2.0 version.....</b>	<b>3</b>
<b>Installation and features.....</b>	<b>6</b>
Installation of the Ctrlr panel .....	6
Important remarks .....	7
Features .....	8
<b>Communication with your Prologue synth.....</b>	<b>9</b>
Preliminary information .....	9
Connection setup for the standalone version of the panel .....	9
About the connection to the synth.....	10
Testing the Midi connection.....	10
<b>Way of working and top panel functions .....</b>	<b>11</b>
Using the buttons and modifying parameters .....	11
Quick reset to default value .....	12
Opening and closing the panel .....	12
Top panel area.....	13
Load and Save from main area of the panel .....	15
Receive and Send .....	21
Program Init.....	22
Program Rename.....	23
<b>Managing program parameters .....</b>	<b>24</b>
Timbres parameters tab .....	24
Program and Global parameters tab .....	25
<b>The librarian.....</b>	<b>27</b>
Bank and Timbre management tab .....	27
Bank management actions .....	28
Program management actions .....	31
Current program timbres management .....	35
Timbre management.....	36
<b>Program Info and Panel Settings .....</b>	<b>38</b>
Panel settings .....	38
Display and Export info.....	40



<b>Installing and using the Prologue panel as plugin .....</b>	<b>43</b>
Installation.....	43
Midi setup when using the panel as plugin .....	44
Tests and identified limitations .....	45
Cubase .....	46
Cakewalk by Bandlab.....	50
Reaper .....	53
Ableton.....	57
Studio One.....	59
Logic Pro X.....	61
<b>The main Ctrlr menus .....</b>	<b>64</b>
<b>Appendix .....</b>	<b>65</b>
Version history .....	65
Prologue information .....	65
Using Midi-OX to download your Prologue content.....	65

## Installation and features

### Installation of the Ctrlr panel

The panel is provided as a compressed .zip file containing:

- the Korg Prologue panel as an .exe file on Windows PC
- the Korg Prologue panel as an .app file on Mac OS (zip folder to be uncompressed)
- the Korg Prologue panel as VST 32 bits and 64 bits for Windows PC
- the Korg Prologue panel as VST and AU plugins for Mac OS
- this manual as PDF

For the PC standalone version, decompress the zip file anywhere on your PC then copy the **Korg Prologue.exe** file in some directory and launch it. The file may be scanned by your antivirus program (Avast on my computer) and should return no issue. If any, they are false and probably due to the fact that the program is not officially referenced.

For the Mac OS standalone version, decompress the zip file anywhere on your Mac then decompress the Korg Prologue.app.zip. You may have to open the **Korg Prologue.app** file using Ctrl+click as it may not be recognized by the OS.

The program will directly display the Ctrlr window with the Prologue panel displaying its main tab with a Welcome message. The panel always opens with an Init program that is not sent to the synth. It will also indicate if communication has been established or not.



It is possible that the top row buttons are not responding after the initial installation (first try the Init button for ex.). Simply close the program and restart it. The issue should be solved.

For the installation of the plugins, please refer to Installing and using the Prologue panel as plugin on page 43 further in this manual.

## Important remarks

As mentioned in the introduction, the Prologue has many parameters, shift functions, etc... It is thus a complex instrument and by that despite a lot of attention there could still be some imperfections.



The main thing to understand is that the Prologue is using CC messages for direct parameter changes but full sysex messages for complete patches.

There can only be 127 CC messages and each message has a value of maximum 127.

This means first that not all parameters of the Prologue can be handled directly (with a NRPN implementation it would have been no issue) and thus that to hear the change of the other parameters it is needed to send a full dump. Those other program parameters are indicated in light green on the panel and small Send buttons are available at different places to make the Send easy.

But the main other possible issue is that internally and through the sysex messages, some parameters (ADSR...) are handled with 0-1023 values. There can thus be a difference between the actual value set on the synth manually and the corresponding one sent by CC when the synth value is just between 2 CC ones.

During the development of the panel I have also encountered possible bugs either in the Midi implementation or in the synth.

Here is a list of those:

- Mod Effect type is indicated in the Midi implementation as being 0-4 but it is 1-5
- Arp Range is indicated in the Midi implementation as being 0-15 but it is 0-3
- Midi Aftertouch should be 2-32 in positions 200 and 326 of the unpacked sysex dump but it appears often as 0xFF (255d). When a value above 32 is encountered, the panel sets the default value LFO INT
- End of Global settings sysex dump is GLOE and not GLED
- When transmitted by the synth, ModFX User16 and Multi Engine User16 are indicated with a CC value of 128 while when received by the synth the midi implementation doc indicates 120-127. From the test, it works fine with 127 and it is thus probably a mistake in the Midi specs.
- There must have been different people working on the Delay/reverb implementation which is making the setup very confusing:
  - On the synthesizer, there is only one button with 3 positions, Delay/Reverb/Off
  - As CC values, there are 2 CC's that are received and transmitted: Delay/Reverb On/Off and Delay: Reverb Type. Delay/Reverb On/Off handles On/Off while Delay Reverb Type handles Delay or Reverb
  - In the sysex dumps implementation there are 2 bytes: Delay/Reverb On/Off and Delay/Reverb Type. The problem is that the Delay/Reverb Type is including Off as a third value besides Delay and Reverb. This means that Delay/Reverb type could be set to Off while Delay/Reverb On/Off is set to On.
- Resetting the LFO INT to zero in the panel (double-click on the LFO INT rotary button) is not completely removing the LFO on the synth. CC message wise, the panel is sending the right value as the synth is sending when positioned on 0 but still the LFO is not eliminated. To eliminate completely the LFO it is needed to perform a Send which will send the full sysex and perform the actual reset

- Arp Latch is not well implemented in the synth according to the documented Midi specs. It should be 02 (01 is ON, 00 is OFF) but the value is 01. Therefore, at the moment, the panel will also send 01 when in the latch position instead of 02

## Features

### **You will find the following features in the Korg Prologue panel:**

- Korg Prologue interface with same look as actual synthesizer
- Top “LCD screen” displaying parameter name and full description, CC number used (or “No CC”), current and saved values for both main and sub timbres at the same time
- Rotary buttons with colored ring
- Switches with same look as synth
- Bi-directional behavior (for CC parameters only): modifying a parameter on the panel modifies it on the synth; modifying a parameter on the synth modifies the panel
- Fast send and small send buttons at different places to send a full program dump to the synth which is needed when changing non-CC parameters (indicated in light green)
- Envelopes graphs handled by mouse or the ADSR rotary buttons
- Load / Save programs from banks or from individual .syx files
- Load / Save Prologue Korg Librarian .prlgprog files
- Load / Save of Minilogue XD .syx files and convert them to Prologue
- Load Minilogue XD Korg Librarian .mnlxgdgprog files and convert them to Prologue
- Receive/Send from/to Prologue buffer
- Direct mode to change programs on the synth
- Easy program renaming
- Display and export of program parameters (current values, saved values, both, comparison, differences) as text file
- Programs have a name, author, save date and description
- Complete librarian providing handling of 2 disk banks and one “Prologue” bank (500 programs by bank). The “Prologue” bank can be received from the actual synthesizer.
- Operations in banks for programs: rename, init, copy, move, swap programs, full comparison, difference only comparison
- Timbres have a name
- Timbre operations in current program: copy main to sub, copy sub to main, swap, rename, init
- Complete timbres librarian providing handling of 2 timbre banks (1000 timbres by bank)
- Operations in banks for timbres: rename, init, copy, move, swap timbres, full comparison
- Global settings management with ability to Receive/Send them from/to the Prologue synth
- Ability to load and see your User oscillators names, mod FX names, delay and reverb names
- Different switches to modify the behavior of the panel according to your way of working
- Panel zoom with memory

## Communication with your Prologue synth

### Preliminary information

The programs of the Prologue contain two timbres, a main timbre and a sub-timbre. Enabling the sub-timbre transforms the Prologue as a two-timbre synthesizer. From there it is possible to use split, crossfade or layering when playing these timbres.

As described in the Korg Prologue manual on p59, there is a global MIDI channel and a “Sub CC” MIDI channel.

The global MIDI channel transmits and receives note messages, pitch bend message, data dump messages and control change messages for the main timbre.

This MIDI Sub CC channel transmits and receives control change messages for the sub-timbre. **The same channel cannot be selected for both “MIDI Global Ch” and “MIDI Sub CC Ch”.**

### Connection setup for the standalone version of the panel

You can connect your Prologue and your computer in different ways but this is the most standard one.



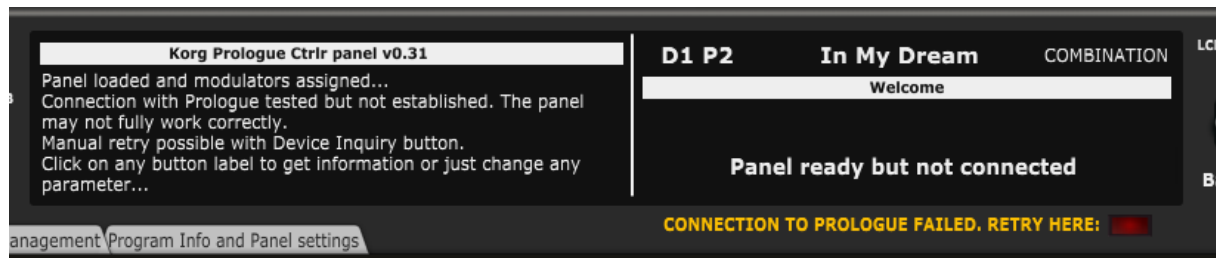
- Connect the Prologue to the computer by USB or Midi DIN
- Power the Prologue On
- Start the Prologue panel
- In the **Midi** menu, select **Input – Device Prologue KBD/KNOB**
- In the **Midi** menu, select **Input – Channel 0** (this is set to channel 0 = All channel because it is needed to receive from both the main timbre and the sub timbre)
- In the **Midi** menu, check that **Controller – Device** is set to *None*
- In the **Midi** menu, select **Output – Device Prologue SOUND**
- In the **Midi** menu, select **Output – Channel 1** (set this to the Midi Global channel of your Prologue).
- **Quit the panel and re-open it**
- Enable the Sub by switching the switch close to the Prologue logo to ON
- Go to the second tab and at the bottom, adjust the Sub Midi channel to your Midi Sub CC channel

The panel is maintaining those settings from one session to the next one. Switching the Sub On or Off is not affecting the Midi Sub CC channel.

### About the connection to the synth...

At opening, the panel is sending a Device Inquiry midi message to the synth. If the expected answer is coming from the synth then the panel is showing that the synth is connected (and will be using the Midi channels set as described in the previous paragraph).

A message will appear just under the LCD on the panel with a red button allowing you to retry as long as the right answer is not received. You can retry at any time and several times. The message and button are not displayed anymore when the reply from the synth is successful.



A Device Inquiry message can still be sent at any time by clicking on the corresponding button from the **Program Info and Panel Settings** tab.

### Testing the Midi connection

We can now test the Midi connection for your **main timbre**:

- In the panel, set the Edit switch on MAIN. Check that it is also like that in the synth (when the connection is working, it is also set on the synth)
- In the panel, turn the Amp EG Attack rotary button of the main timbre and check that the Prologue LCD indicates the change and that the attack of the current sound is changing by playing a few notes or a chord
- On the Prologue, turn the Amp EG Attack rotary button of the main timbre and check that the corresponding rotary button is moving in the panel

We can now test the Midi connection for your **sub timbre**:

- Set the SUB switch on the ON position
- In the panel, set the Edit switch on SUB. Check that it is also like that in the synth (when the connection is working, it is also set on the synth when you move the switch). When editing the Sub, setting the Edit switch in that position will secure the bidirectional behavior.



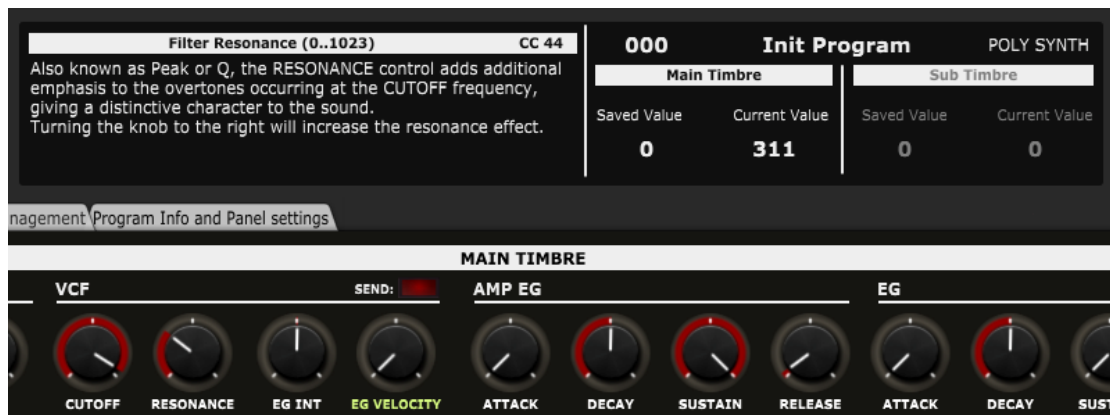
When you position the Edit switch on MAIN+SUB, changing a parameter on the Prologue will make both Main and Sub corresponding rotary buttons turn and have the same value in the panel. From the panel you can always access both Main and Sub directly.

## Way of working and top panel functions

As you will discover by yourself, the main usage of the panel is straightforward but there are anyway different specific things you should know... ☺

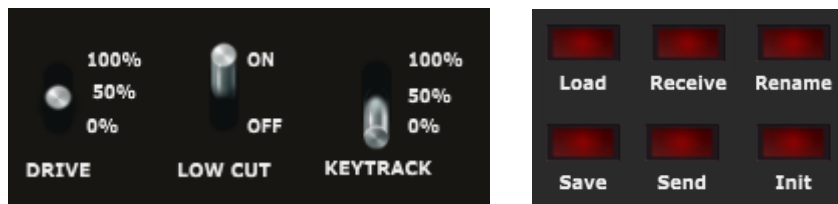
### Using the buttons and modifying parameters

You modify parameters using a rotary buttons by keeping the left mouse pressed and moving the mouse cursor vertically up or down. Clicking on a rotary button displays the parameter information, its current and saved values for the main and sub timbres.



You can also modify any rotary encoder based parameter by doing a mouse hover on the button then using the mouse scroll wheel.

Clicking on switches modifies their position. There is no left/right; up/down effect; just a simple toggle between the two or three positions. Clicking on the label of a switch displays the parameter information, its current and saved values.



Clicking on momentary push buttons is activating them briefly (what a surprise...). They will momentary flash.

Clicking on permanent toggle buttons (like the “Voice Mode” ones) is activating them (what a surprise...). They will stay highlighted until the next click.

Parameters presented as pulldowns are modified by opening the pulldown and selecting one of the pull-down items. Clicking on the label of a pulldown menu displays the parameter information, its current and saved values.





## Quick reset to default value

Rotary encoders have default values set and you can quickly revert to this preset default value by double-clicking on the button. Try with the VCO Pitch or any of the Amp EG ADSR buttons.

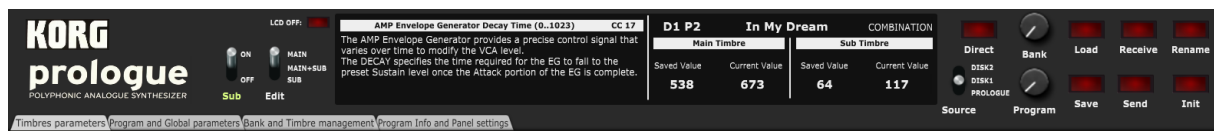
## Opening and closing the panel

When closing the panel (either by using **File – Quit** or by clicking on the upper right red cross) the state of the panel is stored.

When opening the panel, a Welcome message indicating the panel the panel version and the status of the connection with your Prologue. The panel should be in the state you left it (same zoom level, same loaded banks if not moved, same buttons positions...). Pay of course attention that the panel may not reflect your Prologue buffer in the case you have been using your synth without the panel.



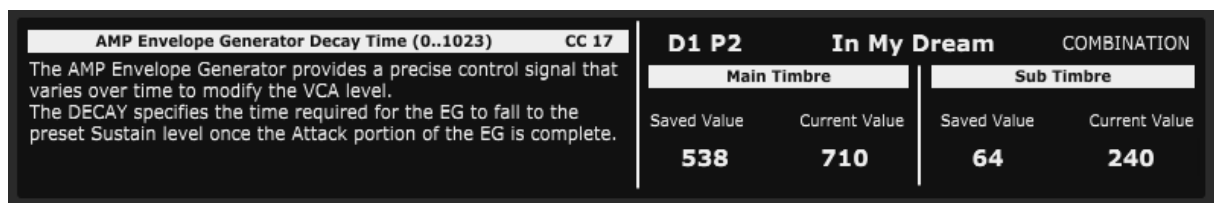
## Top panel area



In the top panel area, you will find the main “LCD screen”, different buttons and four tabs.

In the center, the LCD screen will show you:

- The name of the parameter, its range and the number of the CC message it is using or “No CC”
- A description of the parameter as in the manual
- The bank, number, name and category of the current program
- The saved and current value of the selected parameter for the main and the sub timbre



The sub timbre information is greyed out when the sub timbre is Off and is hidden when Program parameters are selected.

On the left side, you find the four tabs and three switches:

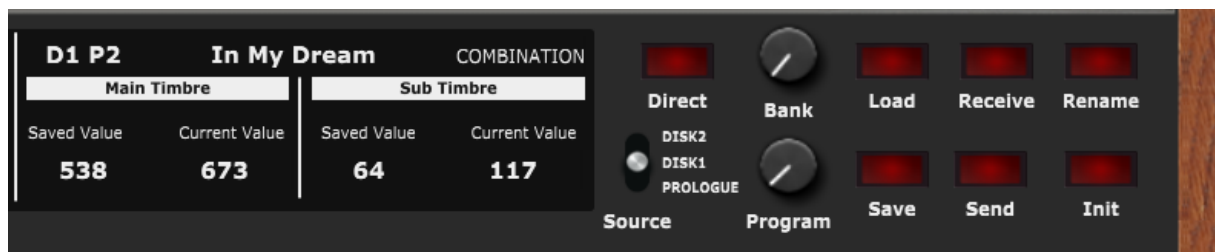


- The **Timbres parameters** tab presents you all parameters of both the main and sub timbres except the ones related to the VPM and Multi Engine
- The **Program and Global parameters** tab displays the VPM and Multi Engine parameters for both the main and sub timbres and all the parameters at program level (effects, arpeggiator...). It also allows you to manage the global parameters of the synth; to provide a description of your program, indicate the author and the category
- The **Bank and Timbre management** is the librarian. It allows you to perform different program operations on up to 3 banks of 500 programs (move, copy, swap, init, compare...). It is there that you have the ability to manage the timbres of the current program (names, copy, swap, init) but also the timbres of all the 500 programs in two banks (copy, init, swap, rename, compare)
- Finally, the **Program Info and Panel settings** tab provides you info on the current version of the panel, different switches to adapt the panel behavior, the zoom factor and the Program information list window allowing you to display and export the detailed information about the current program or programs/timbres from the library.
- The **LCD OFF** button allows to keep the “LCD screen” black and thus not updated when parameter values are changing. This is useful for example when you are using the panel in a DAW with the

automation of different parameters at once. Unless keeping the screen black, the LCD content will jump from one parameter to the other and will keep blinking

- The **Sub switch** is setting the sub timbre on or off. As the other light green labelled rotary/switches that information is not directly sent to the synthesizer (not a CC parameter) and you must press one of the Send button to transmit it. Pay attention that pressing the Send button will transmit a full program dump to the synth buffer
- The **Edit triple switch** has no effect on the panel (Main+Sub position not implemented yet) but well on the synthesizer. Set it to Sub when you are changing the Sub timbre parameters in order to have the Prologue panel also handling the same sub timbre parameters. Same for the main timbre.

On the right side, buttons are performing key program operations and some other duties:



- The **Direct** button selects the [Direct mode](#). In that mode, the [Bank](#) and [Program](#) buttons are selecting a program on the actual synth
- The **Source** switch selects the bank from the panel librarian that the program selector is reading the program names from. This is not taken into consideration when the Direct mode is active
- The **Bank** selector allows choosing a bank of 100 programs on the synth (Bank 0-4)
- The **Program** selector allows browsing the programs from the synth (Direct mode ON) or from the bank selected with the Source switch ([Direct mode](#) OFF). The program selector is going from 0 to 100 but with position 0 being special while positions 1-100 are selecting a program on the synth or in the banks. By placing the program selector completely to the left on the 000 position, you will be able to perform an operation with a .syx file or with the synth buffer instead of the selected bank. The top of the LCD is showing the current program in the panel while the bottom part is showing the program at the current program selector position.
- The **Load** button allows loading a Prologue or Minilogue XD sysex file or Prologue Korg Librarian file (.prlgprog) or Minilogue XD file (.mnlgxdprog) from disk or a Prologue program from a bank (see after)
- The **Save** button saves the current program to a sysex file and/or Korg Librarian .prlgprog file (depending on [Save mode](#) switch in the Settings tab) on disk or to a bank (see after)
- The **Receive** button allows receiving a program from the synth ([Direct mode](#) ON) or the content of the synth buffer ([Direct mode](#) OFF)
- The **Send** button sends the current program to the synth
- The **Rename** button allows renaming the current program
- The **Init** button reset all parameters in the panel to those of the *Init program*

## Load and Save from main area of the panel

The main area of the panel allows selecting the current bank and program so you can perform different program operations afterwards whereof Load and Save.

The **Source** switch lets you select the current bank among Disk1, Disk2 and Prologue:

- The Dx banks are Disk banks and are banks loaded in the panel but only existing on the computer
- The idea with the Prologue bank is that it should reflect the content of your Prologue but at this stage it is not possible to receive that content directly.

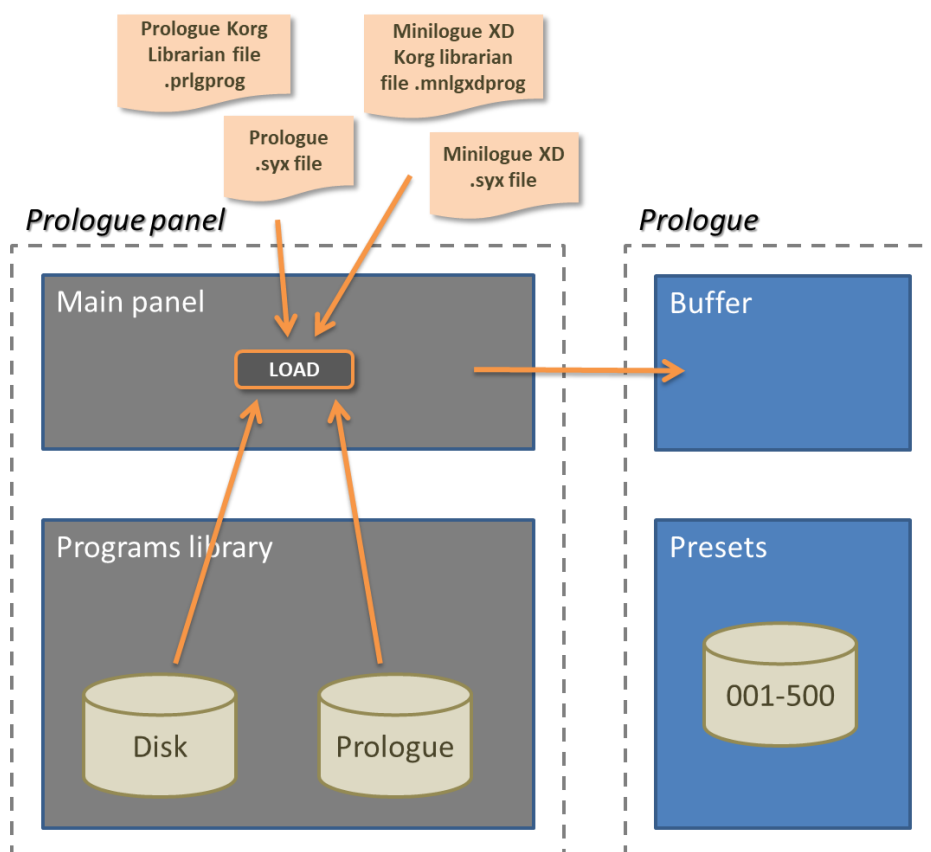
The **Bank** and **Program** rotary buttons let you select the current program:

- The selected program name and number (001-500) is displayed in the lowest part of the LCD display
- When the **Program** button is set to Program 0, whatever bank, a sysex / Prologue Korg Librarian / Minilogue XD Korg Librarian file Load/Save\* can be performed (\*: Save is Prologue only)

Load and Save operations are possible when a program has been selected (some checks are done ☺).

The **Load** button offers the following possibilities and works as follows:

- Load a single Prologue program .syx file in the panel
- Load a single Prologue program .prlgprog file in the panel
- Load a single Minilogue XD program .syx in the panel
- Load a single Minilogue XD program .mnlxdprog in the panel
- Load a program from the D1, D2 banks (if loaded)
- Load a program from the Prologue bank (if loaded)
- The loaded program is sent to the Prologue buffer



When pressing the [Load](#) button after positioning the Source switch on Disk1 and the Program selector on D1 P3, the following confirmation is asked (the confirmation popup can be switched off by changing a setting in the [Panel settings](#) tab):



After the Load in the panel, the program is sent to the Prologue buffer and a confirmation displayed (the confirmation popup can be switched off by changing a setting in the [Panel settings](#) tab)

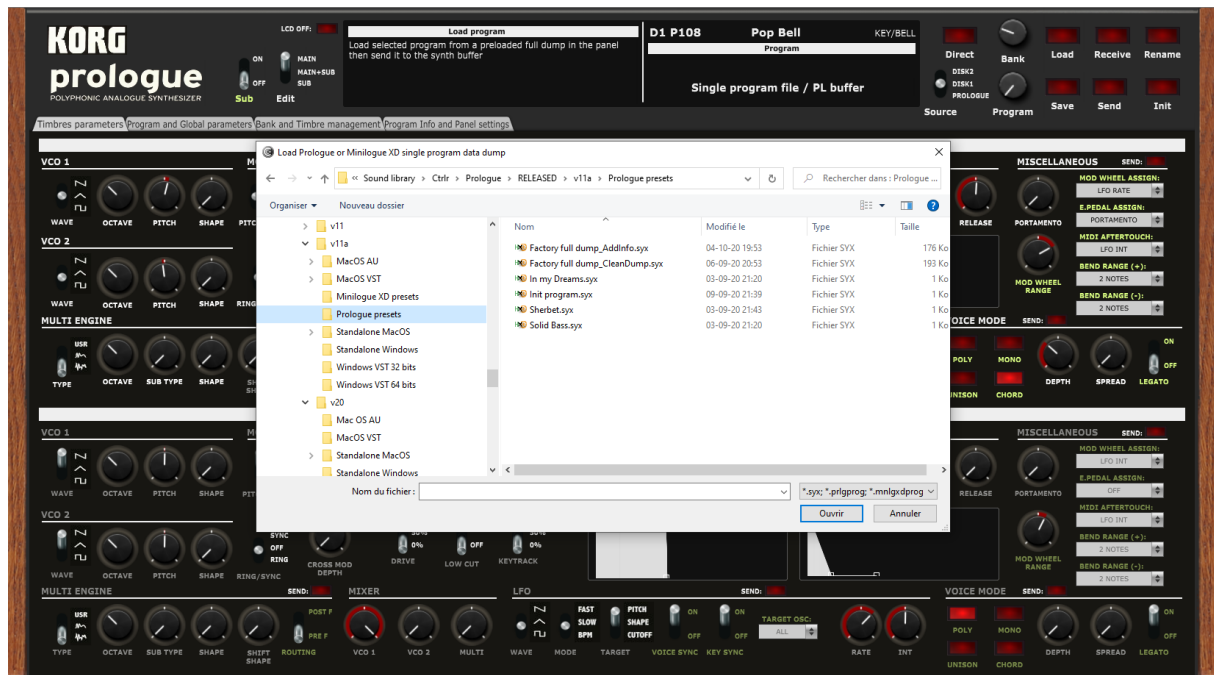


If there is a problem in the connection to the Prologue, then the program is loaded in the panel but not in the Prologue buffer and the following message is displayed:





When positioning the Program selector on the left side and 000 it is possible to load a .syx or .prlgprog or .mnlgxdprog file from the disk:



When a Korg Librarian .prlgprog or .mnlgxdprog is loaded, a small popup will open for a few seconds to perform the reading operation.

When a Minilogue XD file is detected, it will be loaded after a conversion due to differences in Midi specs and in implementation.

The following conversions or adjustments are done:

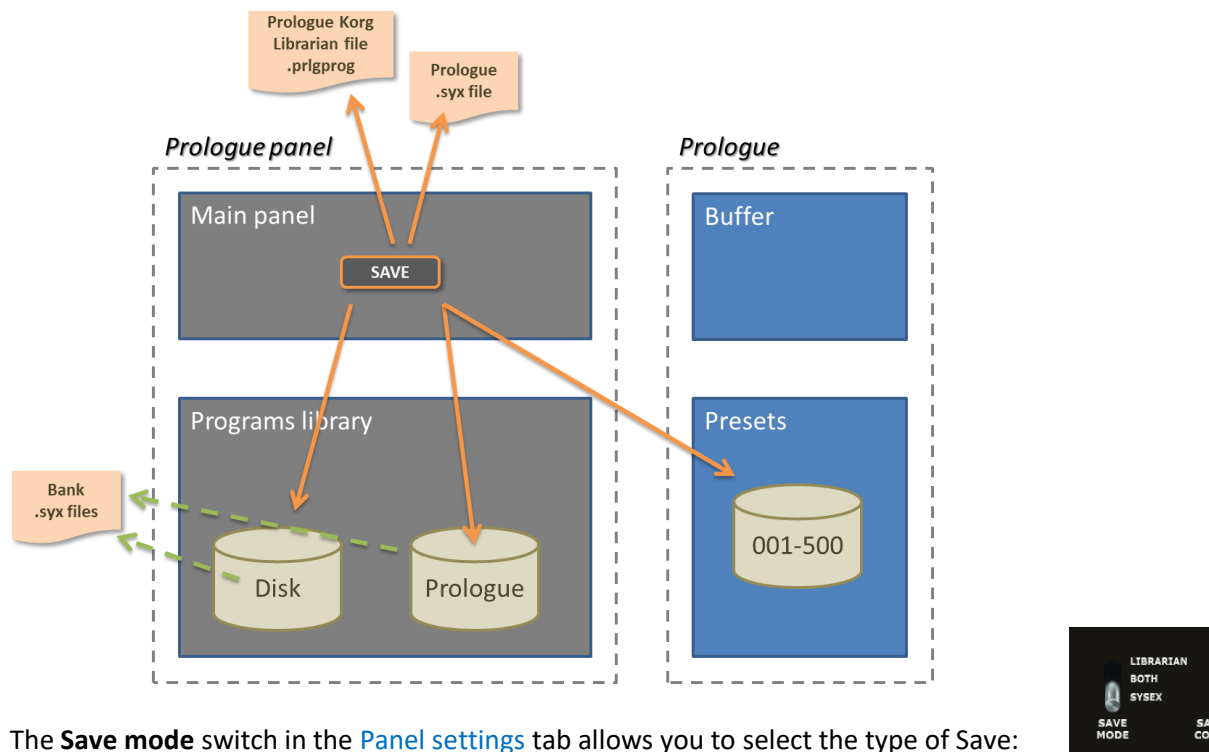
- Almost all parameters common between Prologue and Minilogue XD are kept
- A Minilogue program becomes a Prologue program with only the main timbre
- The program Category is deducted based on different settings
- Arp type is converted
- Envelope 2 Release is set to Envelope 2 Decay (on Minilogue XD, Envelope 2 is AD only)
- All routings are thus set to Main
- Sync/Ring: the Minilogue XD has separate settings for Sync and Ring while the Prologue only one switch being either Sync or Ring (or Off). It is first checked if Sync is On then if Ring is On. When the Minilogue XD has both set to On, the converted prologue program will only have Ring
- The Minilogue XD has Delay and Reverb while the Prologue as either Delay or Reverb. Corresponding delay and reverb settings are matched but the Delay/Reverb switch will be set on Reverb if the Minilogue XD program has delay and reverb.
- The Minilogue XD has an Arp voice mode while the Prologue has a Mono mode. When the Minilogue XD is set to Arp, it will be set on Poly in the panel and the Arp mode activated
- The Minilogue XD has 1-shot and Normal modes for the LFO which do not exist on the Prologue (only BPM is in common). This is converted into the Slow mode on the Prologue.
- The EG target of the Minilogue XD has a Cutoff destination which is not existing directly on the Prologue. If this is set in the loaded program then the EG modulation INT is set to 0 and the Filter EG INT gets the value from the Minilogue program. When the Minilogue XD file has either Pitch (all oscillators) or Pitch 2 (OSC2) selected then those are set with the Pitch EG target switch and the Filter EG INT is set to 0.
- Midi Aftertouch settings have some differences and are matched as best as possible





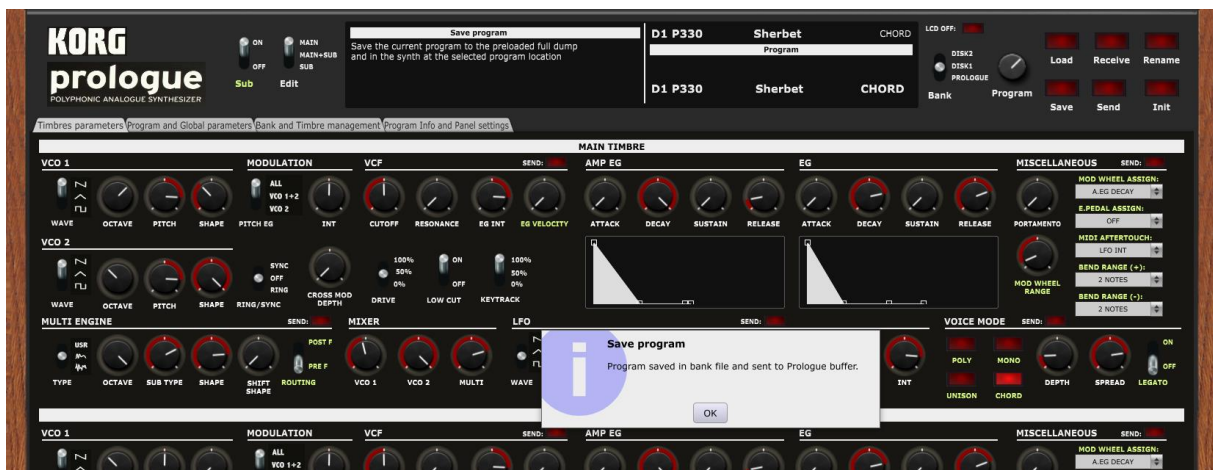
The **Save** button offers the following possibilities and works as follows:

- Save the current program to a .syx file
- Save the current program to a Korg Librarian .prlgprog file
- Save the current program to the D1, D2 banks (if loaded)
- Save the current program to the Prologue bank (if loaded)
- When saved in a bank, the corresponding bank file is also updated on the computer (when BankAutoSave is On – this can be set in the **Program Info and Panel Settings** tab)
- When saved in the Prologue bank, the program is also saved in the corresponding Prologue preset

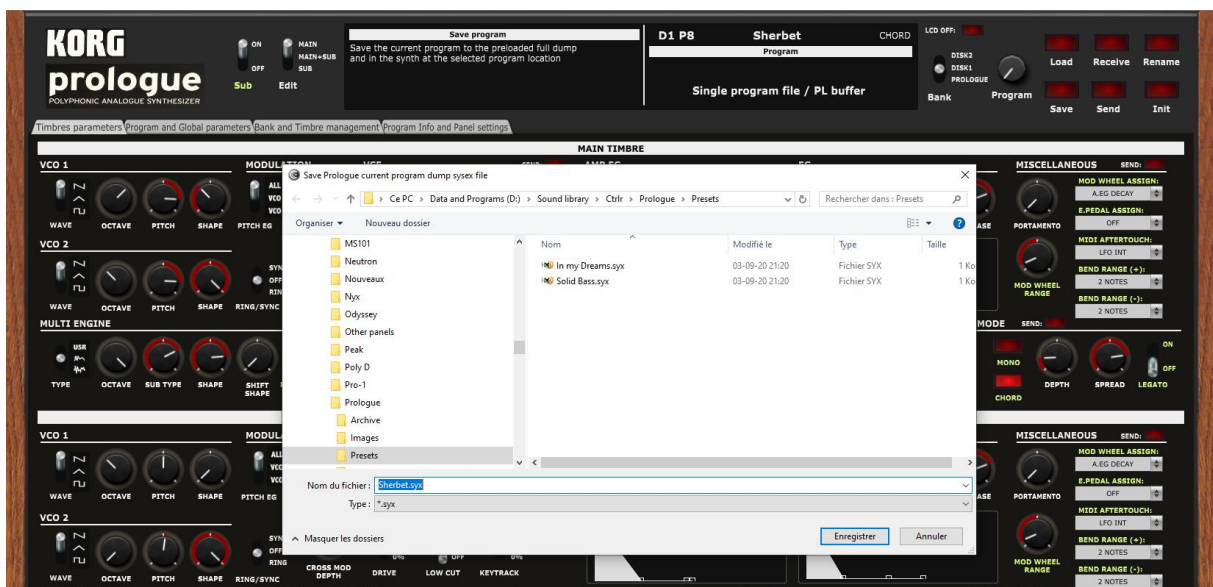


The **Save mode** switch in the **Panel settings** tab allows you to select the type of Save:





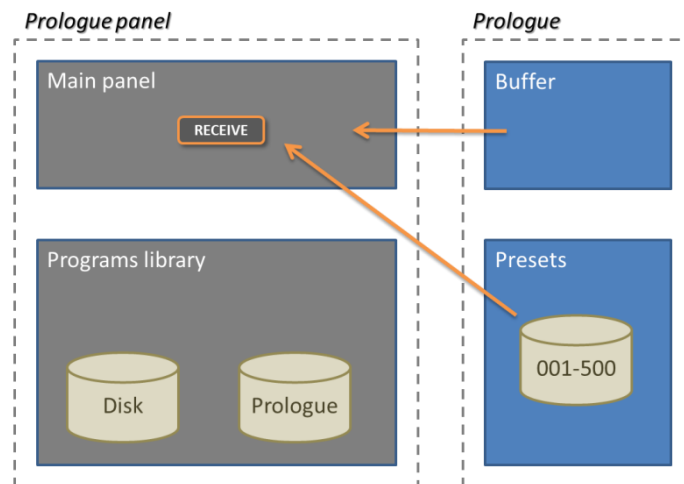
As for Load, the confirmation popups (before and after Save) can be switched off by changing the settings in the [Panel settings](#) tab.



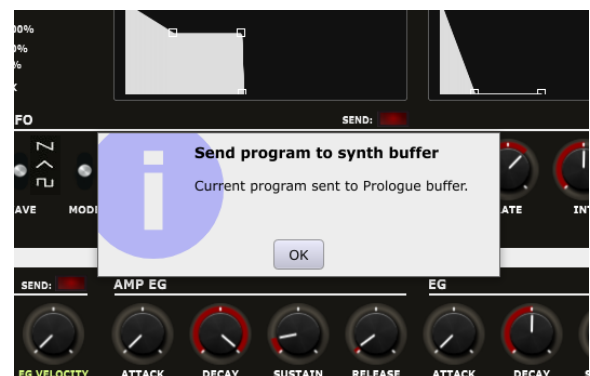
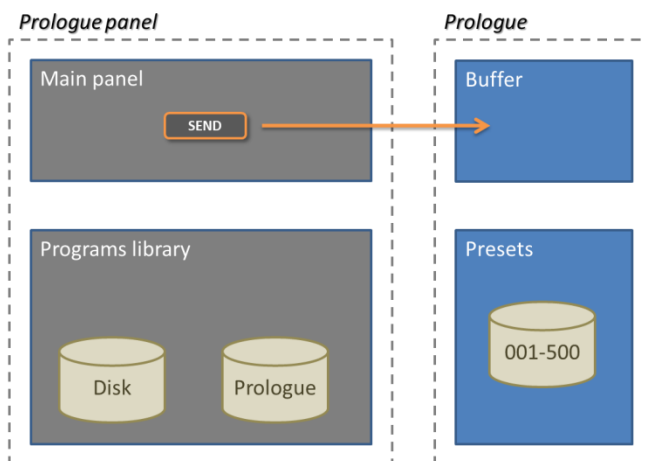
When saving a program the complementary information (description, save date and timbre names) is also saved on the disk.

## Receive and Send

Depending on the **Direct mode** selection and the position of the Program selector, clicking the **Receive** button loads either the Prologue buffer (current program) – when the Program selector is completely to the left at 000 – or any of the 001 to 500 presets from the synth.



Clicking the **Send** button sends the current program parameters (program, main and sub timbres parameters) to the Prologue buffer. When using the main top right Send button, you are prompted if you want to send the parameters and you are also getting a confirmation.



At different places in the two first tabs in the panel you will find small Send buttons

They are also used to quickly send the current program parameters to the synth buffer in order to hear the changes in sound when you did some changes to non CC parameters.

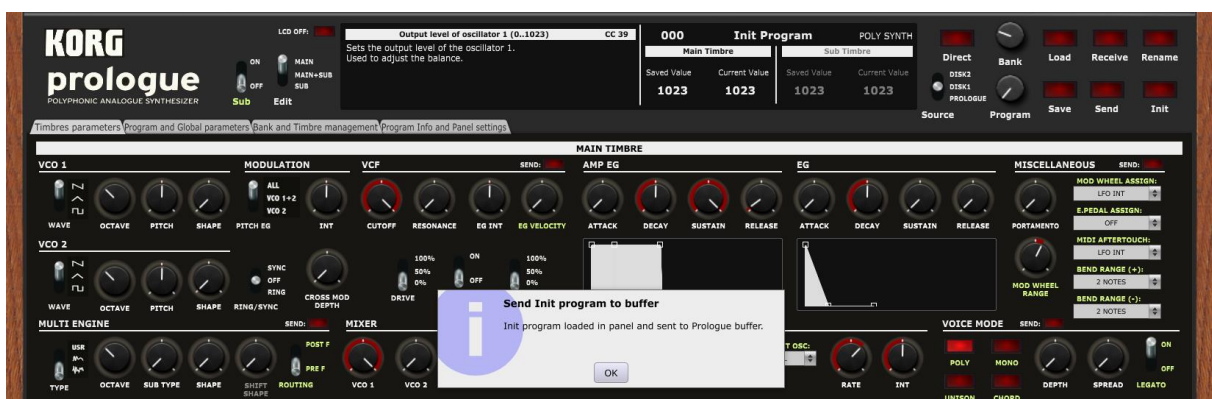


You can keep or switch off the send prompt and confirmation messages of the small Send buttons with the panel settings switches in the **Program info and Panel settings** tab.



## Program Init

Clicking the **Init** button loads an Init program in the panel and that can be sent to the synth buffer:



## Program Rename

Clicking the **Rename** button opens a popup window where you can modify the name of the program. The name should be 12 characters long at max (will be truncated if longer).



The new name will be kept only after a Save or Send operation.

## Managing program parameters

### Timbres parameters tab

In the **Timbres parameters** tab, you have access to the same parameters as on the actual synthesizer for both the main (upper part) and sub (lower part) timbres at the same time with the possibility to visualize the ADSR envelopes and to adjust them by moving the anchors of the graphs.



When the Sub timbre is Off, all the corresponding controls are disabled:



As mentioned earlier, the LCD screen is showing the name, description, saved and current values of the parameter you are looking at (click on the button or the label of a switch/pulldown) or modifying for both main and sub timbres.



Parameters indicated in light green do not have a CC midi message number associated to them and are thus not sent in real time to the synth. You must press on one of the Send button to send a complete program dump in order to hear/see the difference on the synth.



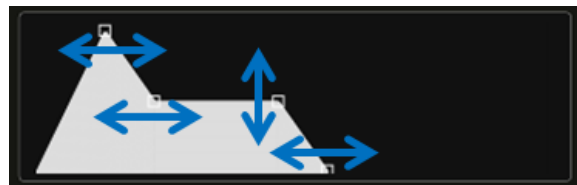
You can decide to keep the light green non CC parameters visible and working or disabled or not visible at all with the panel settings switches in the **Program info and Panel settings** tab.

Voice Mode buttons are acting as toggle buttons (only one of them can be active at a certain time).

The Multi Engine sub type and shape buttons have different values according to the multi engine type selected (Noise, VPM or User). It is possible to load and use your own VPM and Multi Engine oscillators' names (see after)

### Envelope shapes

You can modify the envelope shapes by either moving the ADSR rotary buttons or by using the mouse and moving the anchors on the graphs either vertically or horizontally.

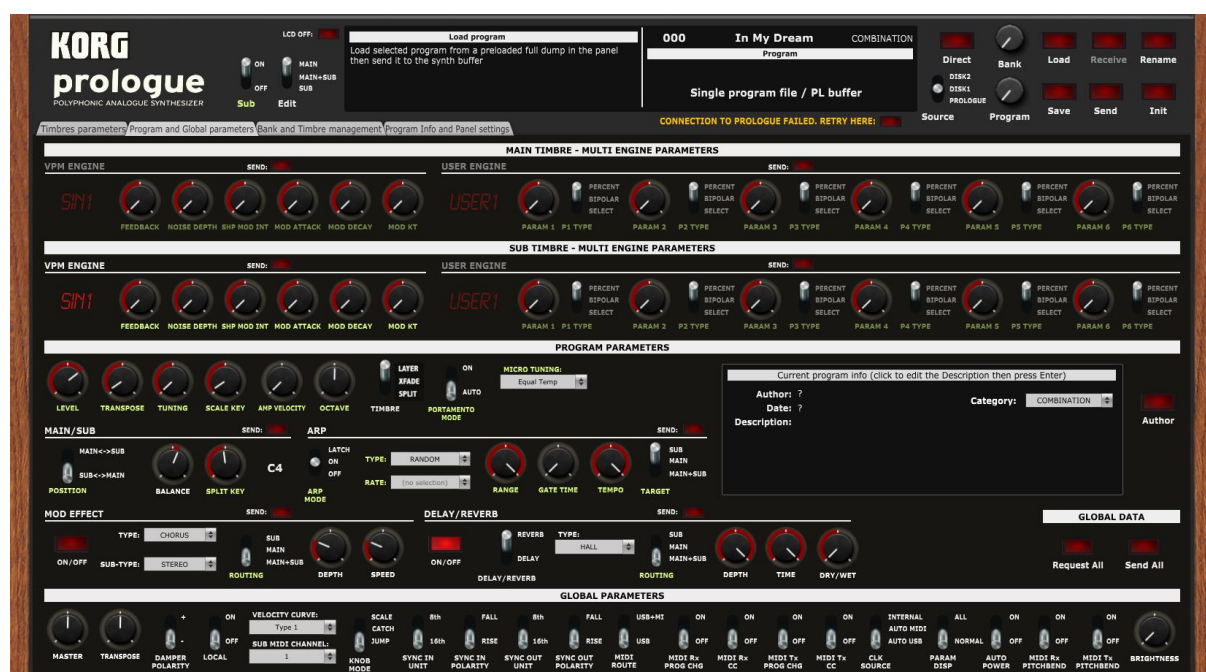


When moving the anchors, the corresponding ADSR buttons will also move and the LCD screen will display the parameter name, description, saved and current values.

### Program and Global parameters tab

In the **Program and Global parameters** tab, you can:

- manage the VPM and Multi-Engine parameters of both the main and sub timbres
- manage the program level parameters
- add/modify a description of the program, its author and assign the program category





## VPM and Multi Engine parameters

Depending on the selection of the Multi Engine in the first tab (Noise, VPM or User) the corresponding set of parameters is enabled or not. As one can see on the image above, both VPM and User Multi Engine are disabled for the main timbre (meaning it is on Noise) while the VPM parameters are enabled for the sub timbre.

The name of the VPM and User Multi Engine are indicated in the LCD screens. By default, user oscillators' names are USER1 to USER16 but you have the possibility to load the names of your own user oscillators (see the description of the **Program info and Panel settings** tab).

## Program parameters

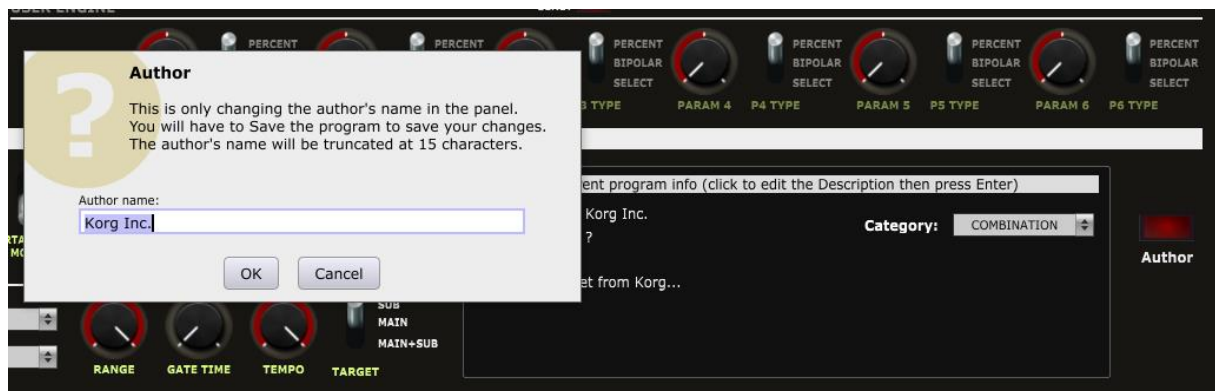
All the different program parameters are available in this section.

In the same way as for the user oscillators' names, it is possible to load the user names for the Delay and the Reverb.

It is also possible to add/modify a description of the program, its author and assign the program category.

The description is edited by clicking in the description text, typing a new text then pressing the Enter key before clicking somewhere else.

Clicking the **Author** button opens a popup window where you can modify the name of the author of the patch. The name should be 15 characters long at max (will be truncated if longer). If you leave the Author name empty then a "?" is displayed.



The date is set automatically when saving the program.

## Global parameters

It is possible to manage all the global parameters available on the synth.

As they are not available as CC midi message or in separate sysex messages, they are only handled as a full dump (received and sent).

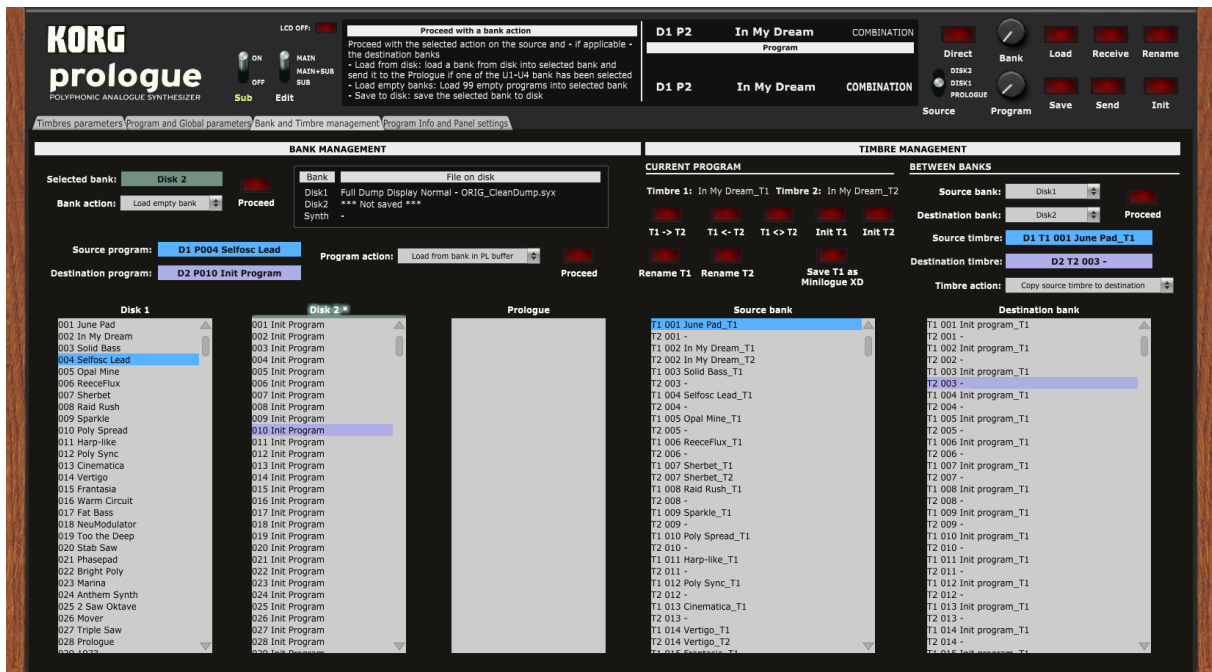
Use the Receive All and Send All buttons to manage your changes of Global settings.

## The librarian

### Bank and Timbre management tab

In the **Bank and Timbre management** tab, you have access to the librarian that allows you to:

- Perform different program operations on up to 3 banks of 500 programs (move, copy, swap, init, compare...)
- manage the timbres of the current program (names, copy, swap, init)
- manage the timbres of all the 500 programs in two banks (copy, init, swap, rename, compare)



A **Bank receive** function has been added in the version 1.1 of the panel. See here after on how to load the actual content of your Prologue in the Prologue bank.



Use the preset banks from the provided Zip file as starting point in Bank and Timbre management and please take the time to well read and understand the next paragraph!

### Bank files concept

The exported full dump containing 500 programs doesn't contain extra information as patch description, author, timbre names, save date. We have also noticed that full dump can be of different sizes.

Therefore, when selecting a full dump to load, the original *your\_fulldump.syx* file is transformed into a *your\_fulldump\_CleanDump.syx* file and a *your\_fulldump\_AddInfo.syx* file. The first file will contain only the 500 programs while the second one will contain the extra information for the 500 programs.

When loading a bank from disk later on, you should either pick the original *your\_fulldump.syx* file or the cleaned version *your\_fulldump\_CleanDump.syx*.

## Bank management actions

You have **2 Disk banks** and **1 Prologue bank** available.

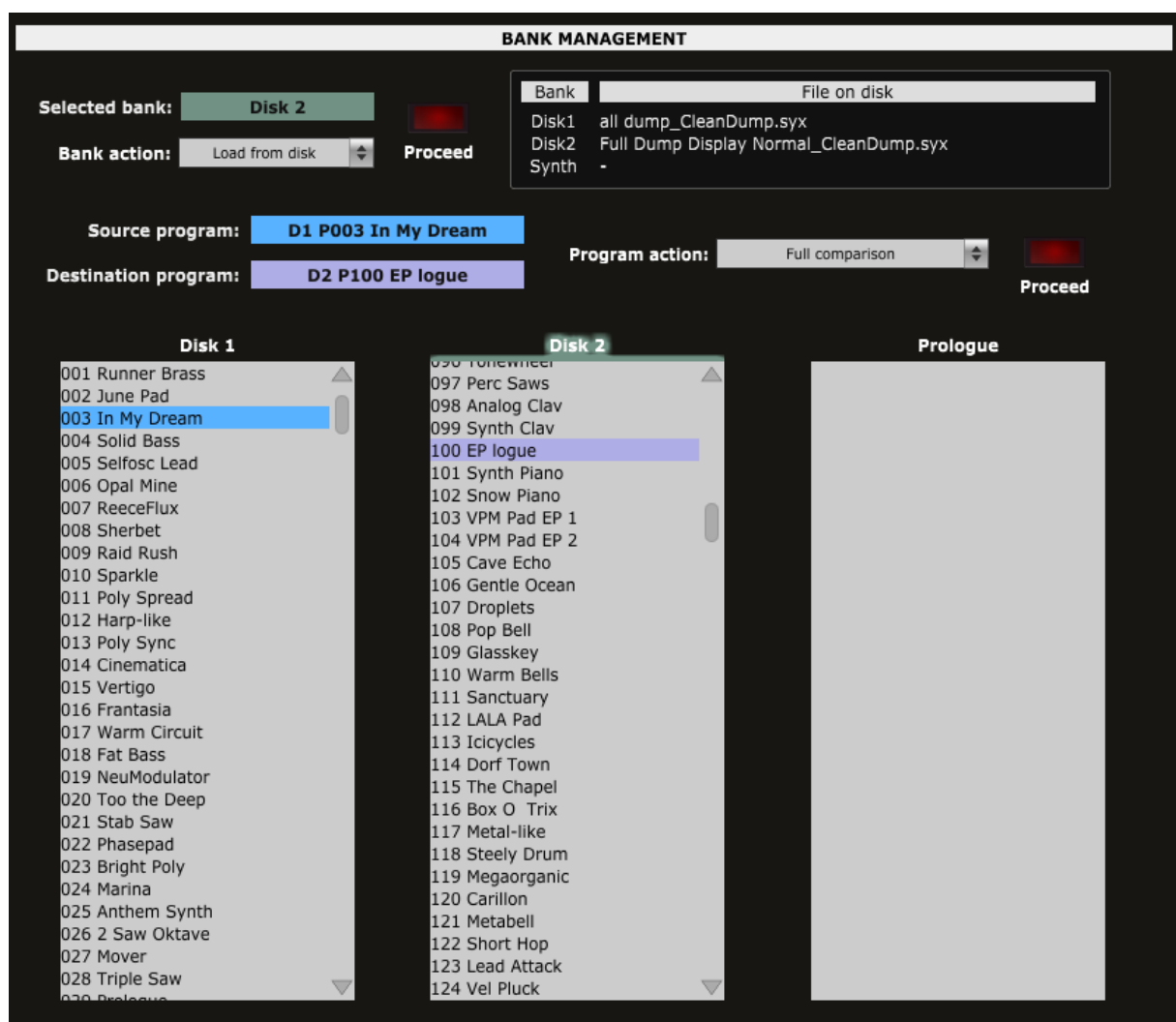
Disk banks only exist in the computer world (memory and file); changing them is not affecting the synthesizer and they can be used to assemble programs in some kind of offline mode.

The Prologue bank is supposed to reflect the content of your synth. It is also loaded in memory and has a counterpart as file but some of its modifications are reflected on the synthesizer.



As there is only 1 bank of 500 programs, when the Load empty bank operation is done on the Prologue bank it is not reflected on the synth as it would erase all the content of your synth. This can be changed in a coming update.

The main underlying file behind a loaded bank is indicated in the secondary screen (filename only).



When a Bank is loaded, its programs are available for selection by the main panel Program selector.

The following Bank operations are available:

- Load a full bank from a .syx file in Dx, Prologue banks
- Save a full bank to a .syx file (Save bank to Disk)
- Load an empty bank (500 Init programs) in Dx, Prologue bank (at this stage, if Prologue then the bank is not send to the synthesizer (it would erase all programs on the synth))
- Receive the full content of your Prologue (500 programs) into the Prologue bank
- Clean / Reset a bank in the panel

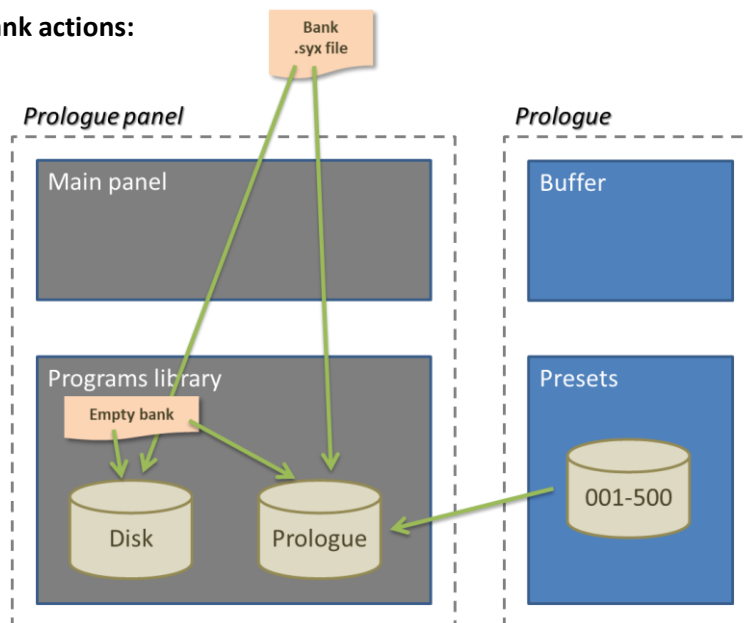
Look at the pictures below for a graphical description of those possibilities.

#### Usage:

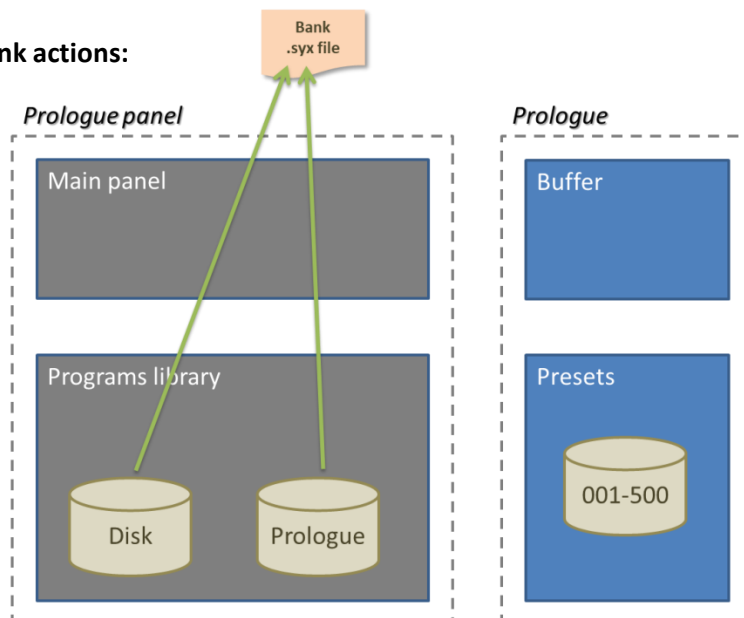


1. Select a bank by **left-clicking on one of the three bank labels**
2. Select an action from the **Bank action** drop-down menu
3. Click on the **Proceed** button.

#### Load bank actions:

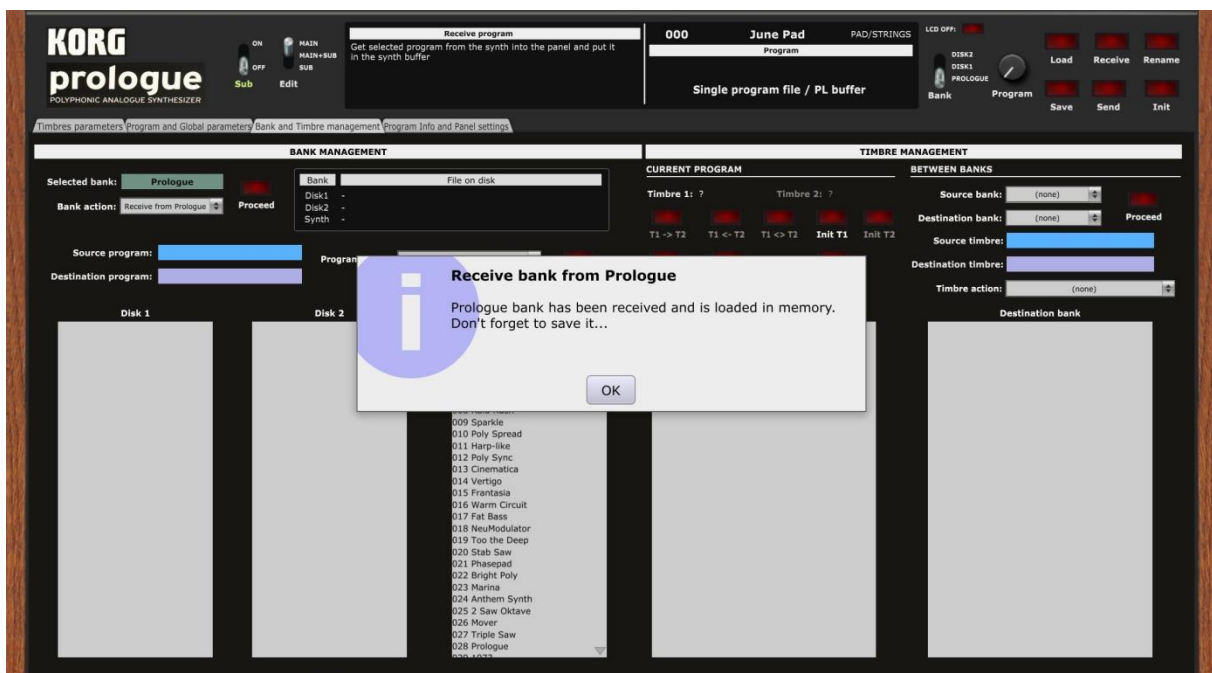
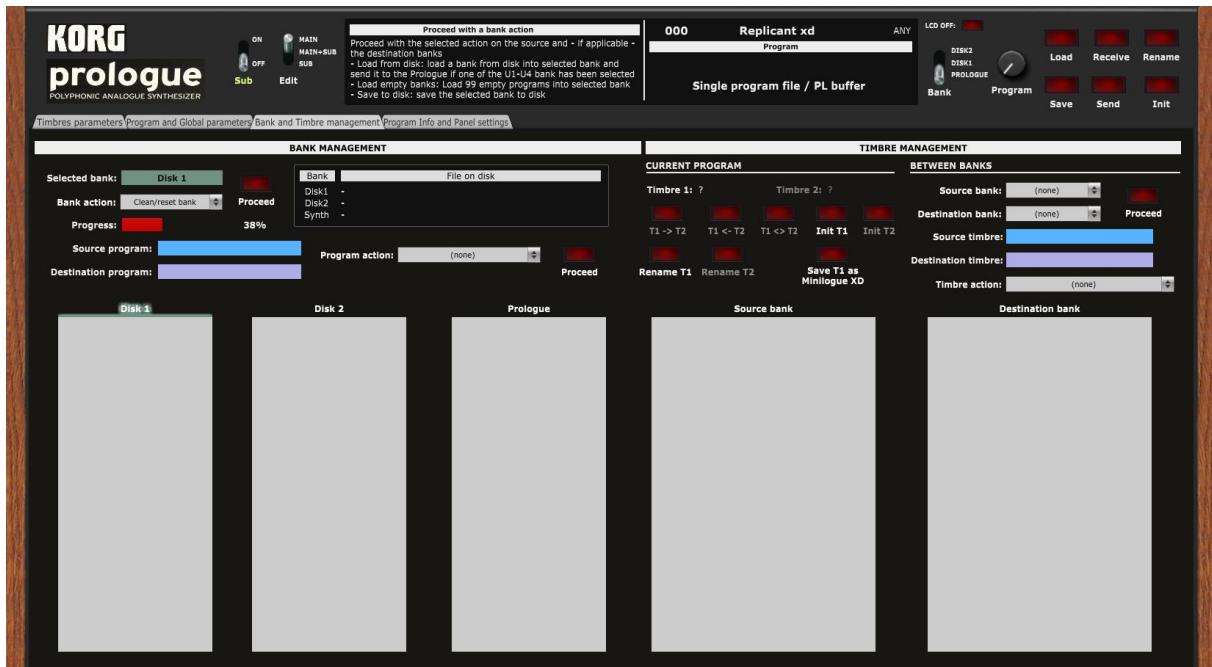


#### Save bank actions:



When performing a Bank Receive, a red progress bar will be displayed and the progress indicated in %. A full load takes about 2 minutes to complete.

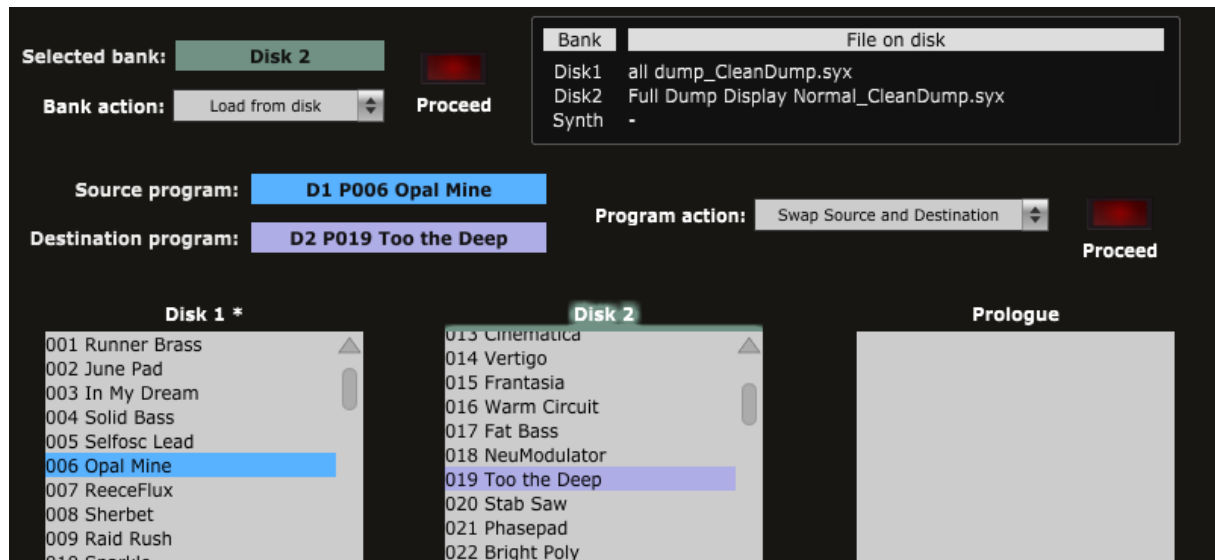
When done, a message is shown and the Prologue bank is listing the content of your Prologue. Any further modification of the content of the Prologue bank is automatically reflected on the synth (optional on the bank file on the disk). For example, when copying a program from the Disk 1 bank to the Prologue bank will replace the content of that destination program in your synth.



## Program management actions

Programs can be selected as soon as some banks are loaded.

A **Source program** is selected by **left**-clicking on a program name; a **Destination program** by **right**-clicking on a program name.



The following program operations are available:

- Load a Source program from a bank (better visibility of all programs and easier selection of any Dx, Prologue program than when using main panel Load). The loaded program is also available in the Prologue buffer (if modified, it must be saved – see Main panel Save)
- Load an Init program in buffer and panel
- Load a single program .syx file in Dx, Prologue destination
- Load an Init program in Dx, Prologue destination.
- Save the Source program to a .syx file
- Save the Prologue buffer to a Dx or Prologue bank (the buffer data is not loaded in the panel)
- Move a program from Source to Destination (the Source program is replaced by a Basic program)
- Copy a program from Source to Destination
- Swap Source and Destination programs
- Full comparison: compare all parameters of the Source and Destination programs and display/list them in the Program Information and Panel settings tab
- Differences only: compare all parameters of the Source and Destination programs and display/list only the differences between them in the Program Information and Panel settings tab

### Please note that:

- When saved in a bank, the corresponding bank file is also updated on the computer (when BankAutoSave is On, otherwise it has to be saved manually)
- It is optional to load a program in the panel and in the Prologue after the Load in a bank
- When saved in the Prologue bank, the program can be saved in the corresponding synth preset



A bank that needs to be saved is indicated by an “\*” as Disk 1 \* in the picture above. This will happen when the **BankAutoSave** switch is set to Off in the **Program info and Panel settings** tab.

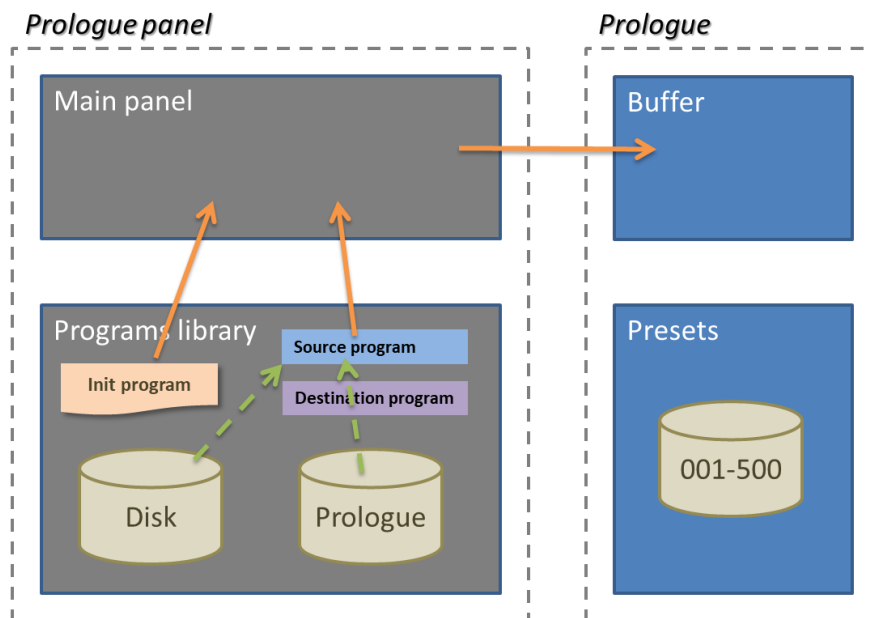
Look at the pictures below for a graphical description of those possibilities.

#### Usage:

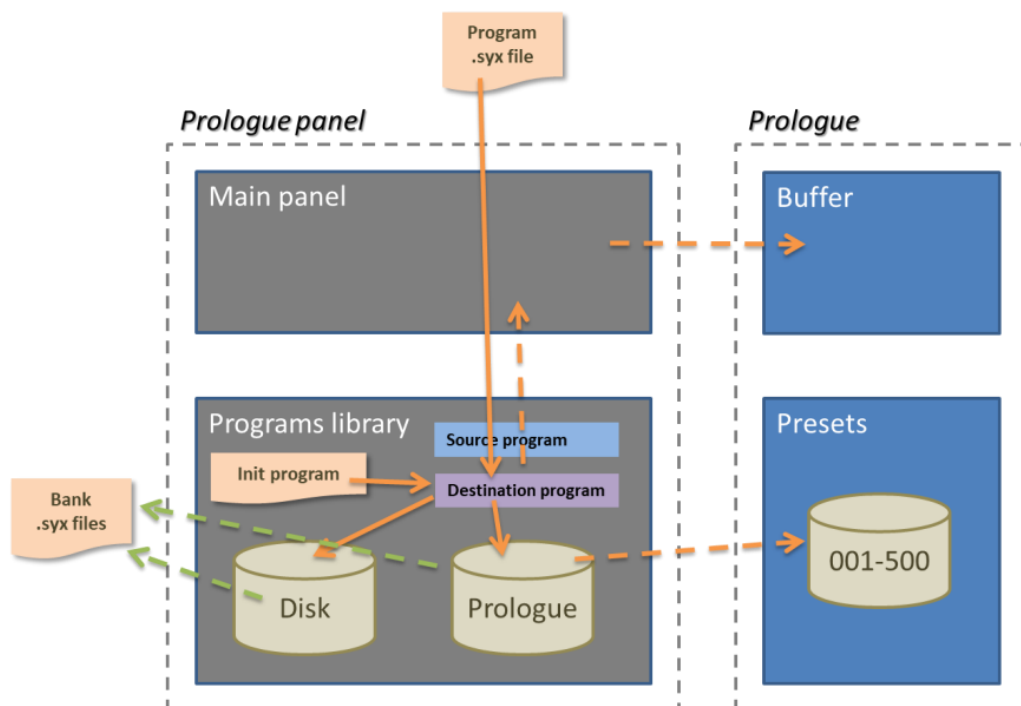


1. Select a source program by **left-clicking on a program name in a bank**
2. Select a destination program by **right-clicking on a program name** in a different bank
3. Select an action from the **Program action** drop-down menu
4. Click on the **Proceed** button.

**Load program actions:** load a Source program from a bank; load an Init program in buffer and panel

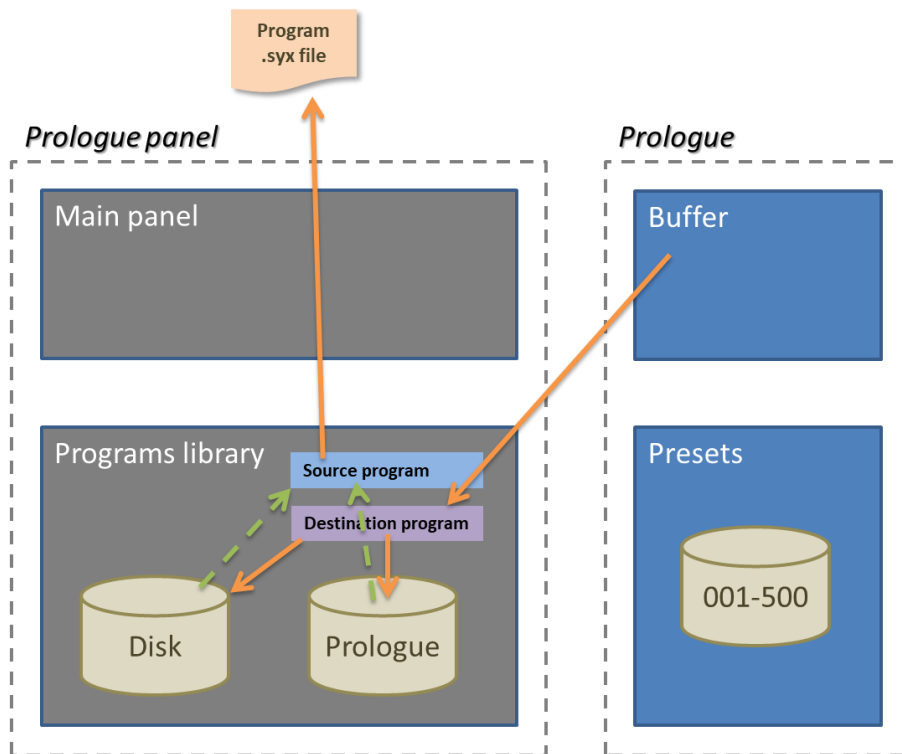


Load a single program .syx file in Dx or Prologue destination; load an Init program in Dx, Prologue destination :

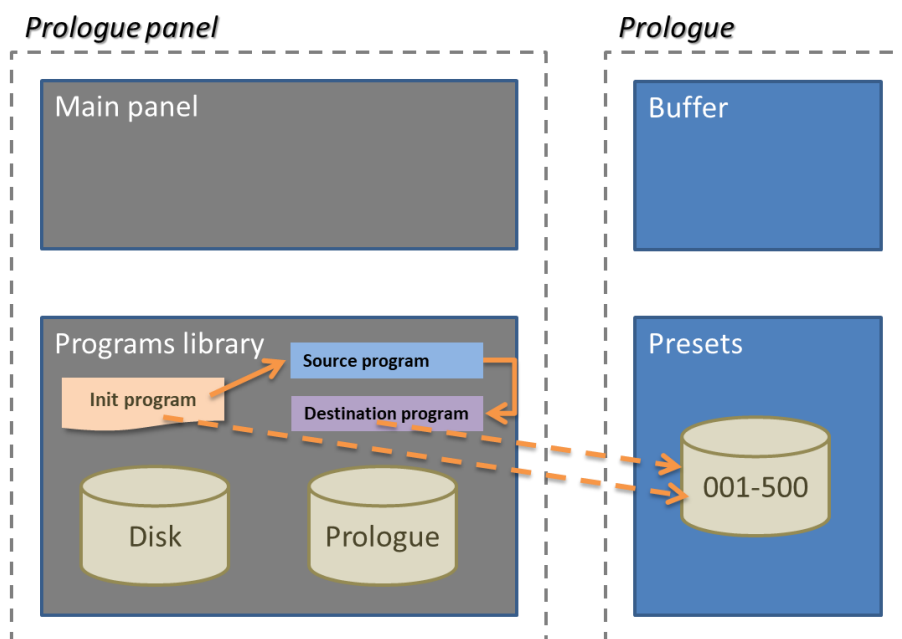




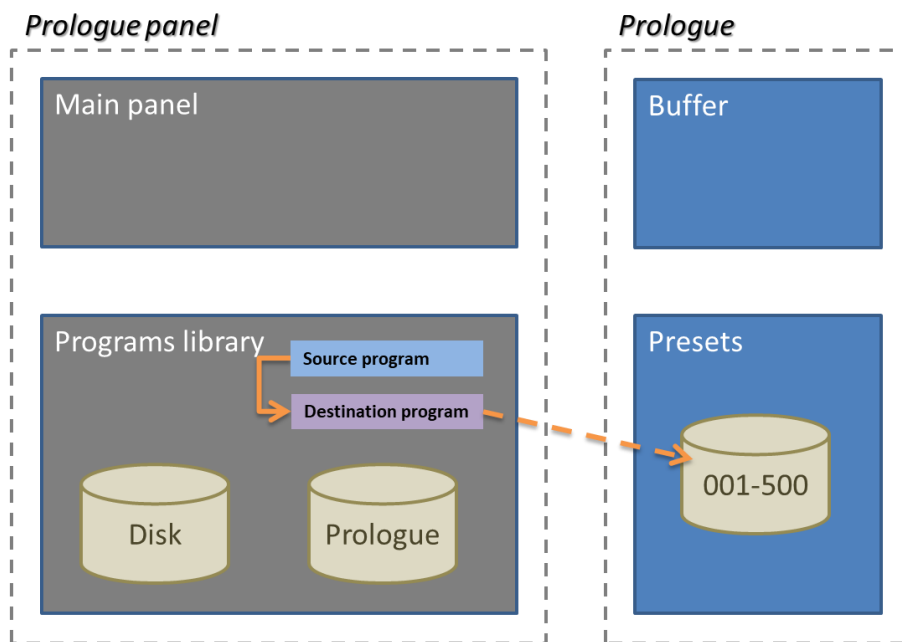
**Save program actions:** save the Source program to a .syx file; save the Prologue buffer to a Dx or Prologue bank (the buffer data is not loaded in the panel)



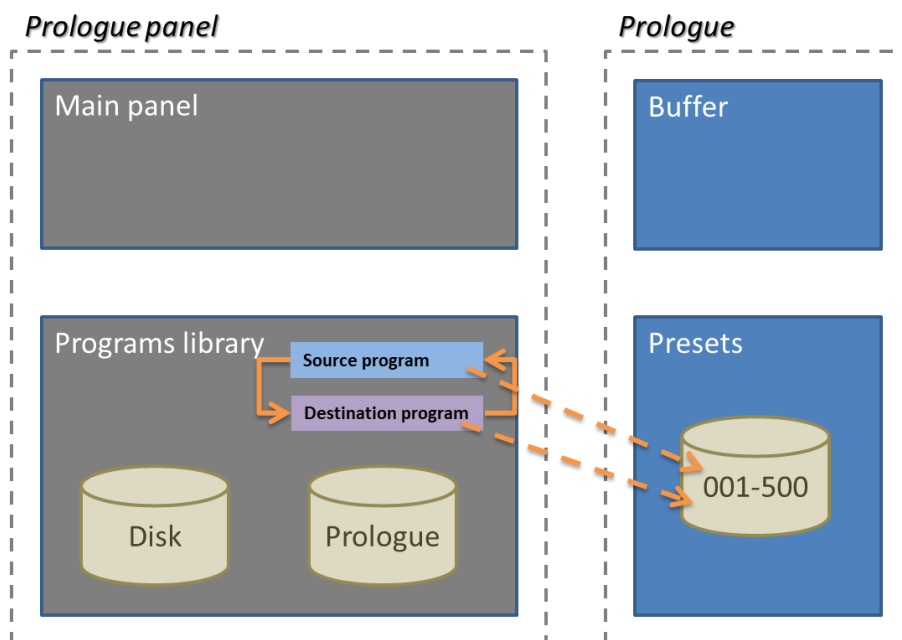
**Move program:** when moving the Source program to the Destination, the Source program is replaced by an Init program. If either the Source or the Destination programs are in the Prologue bank then they are replaced in the synth



**Copy program:** copy a program from the Source to the Destination. If the Destination program is in the Prologue bank then it is replaced in the synth



**Swap program:** Source and Destination programs are swapped. If either the Source or the Destination programs are in the Prologue bank then they are replaced in the synth



## Current program timbres management

The upper right section of the Bank and Timbres management tab allows you to manage the timbres of the current loaded program.



The possible operations are pretty straightforward:

- Copying the timbre 1 (main timbre) to the timbre 2 (sub timbre)
- Copying the timbre 2 (sub timbre) to the timbre 1 (main timbre)
- Swapping timbre 1 and 2
- Initializing the main timbre
- Initializing the sub timbre
- Renaming the main timbre by pressing the Rename T1 button (15 characters max)
- Renaming the sub timbre by pressing the Rename T2 button (15 characters max)
- Saving the Timbre 1 (with conversion) as a Minilogue XD program

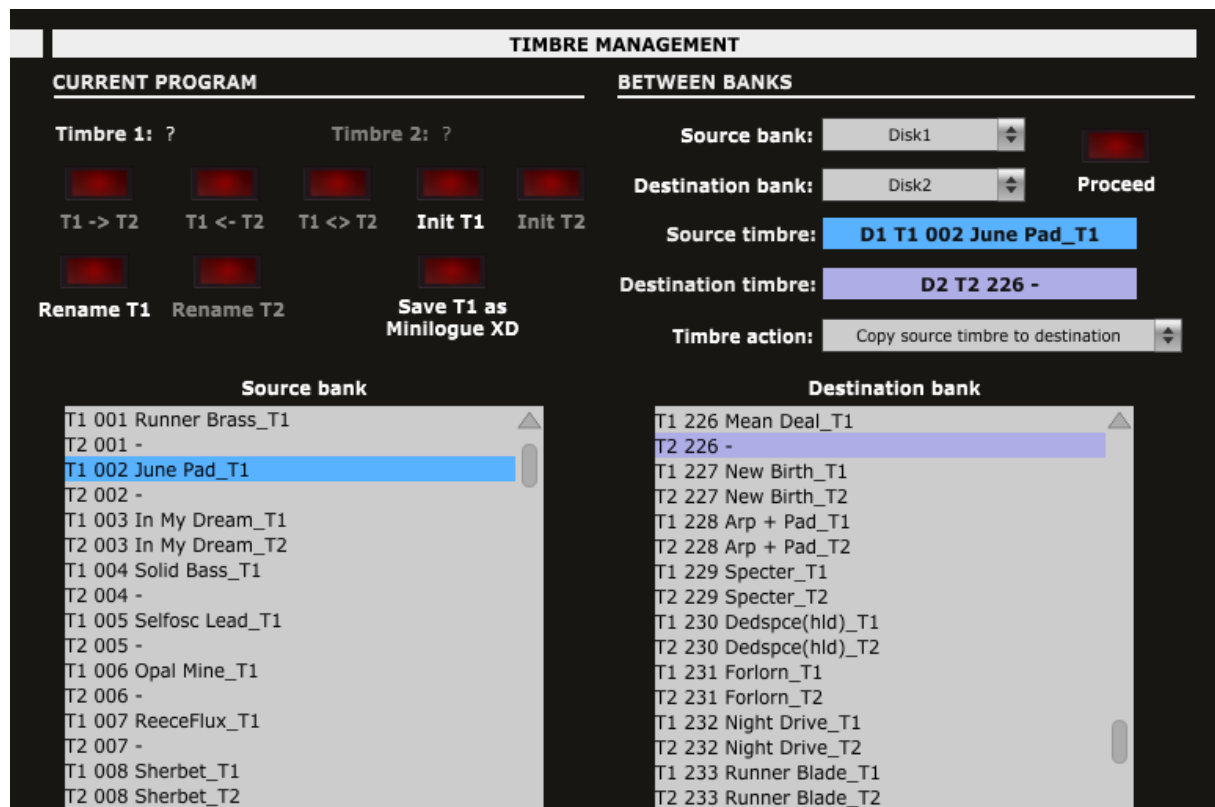
When saving as Minilogue XD program, the starting point is an empty Minilogue XD program if a Minilogue XD program has not been loaded previously. Otherwise, that one is taken as base.

The following conversions are done (fewer assumptions are needed to be made when converting from Prologue to Minilogue XD than in the opposite):

- Almost all parameters common between Prologue and Minilogue XD are kept
- Only the main timbre and some program parameters are taken into consideration
- At this stage, nothing is done when the Prologue is in Mono mode. This can be adapted in a next version of the panel
- The Fast and Slow LFO modes on the Prologue are converted to Normal on the Minilogue XD
- The EG target of the Minilogue XD is set as Cutoff destination when the Pitch EG modulation INT is 0 with the Filter EG INT as EG INT. Otherwise, it is the Pitch EG INT that is used as value with the target being either Pitch (ALL oscillators) or Pitch 2 (OSC2)
- Midi Aftertouch settings have some differences and are matched as best as possible
- Joystick and CV settings are set as in Minilogue XD default program

## Timbre management

The right section of the Bank and Timbres management tab allows you to manage and perform operations on the timbres from the loaded banks.



The content of the Source bank on the left side is selected from the **Source bank pulldown**. This can be the Disk1, Disk2 or Prologue bank. In a similar way and if needed, the content of the Destination bank on the right side is selected from the **Destination bank pulldown**. It can also be the Disk1, Disk2 or Prologue bank.

The information displayed is based on the fact that a sub timbre is enabled or not for a program and on the data residing in the `_AddInfo.syx` file associated with the bank and that is holding the names of the timbres. When a bank file is loaded for the first time, timbres are getting the same name as their parent program but followed by either `_T1` or `_T2`.

Source and Destination timbres are both selected by left-clicking on their names in each respective bank.

The following timbre actions are then possible:

- Copy the source timbre to the destination timbre
- Copy the source timbre to the Main timbre
- Copy the source timbre to the Sub timbre
- Copy the destination timbre to the Main timbre
- Copy the destination timbre to the Sub timbre
- Swap the source and destination timbres
- Replace the source timbre by an Init timbre
- Replace the destination timbre by an Init timbre

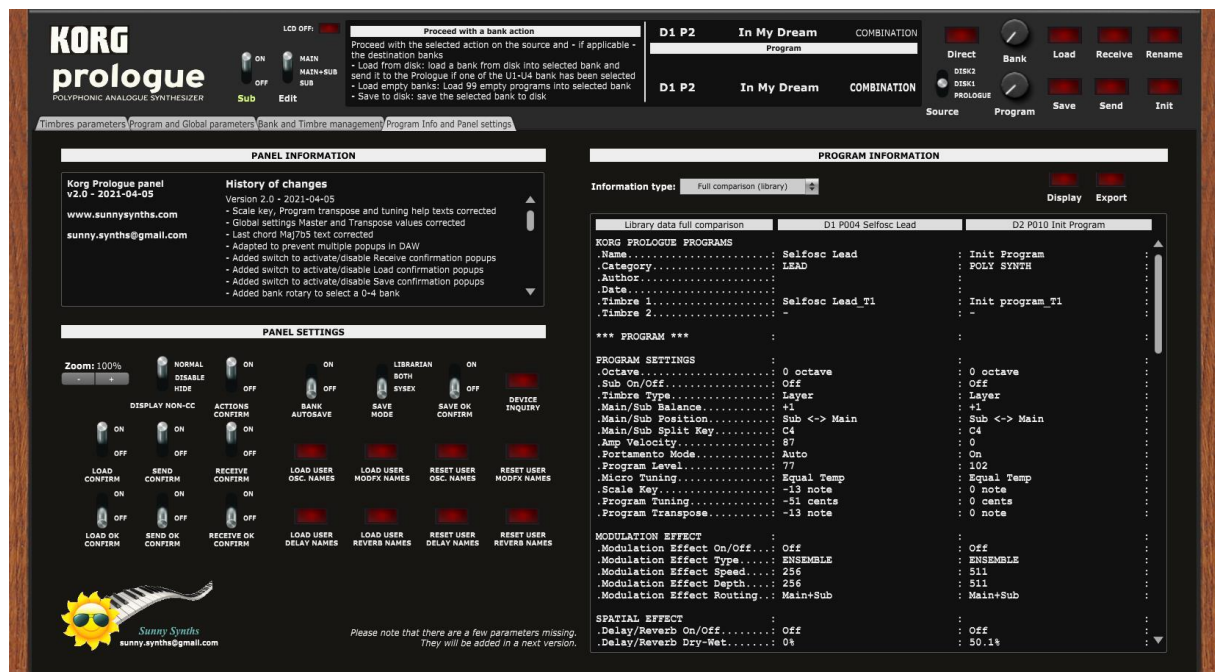
- Rename the source timbre
- Rename the destination timbre
- Full comparison: compare all parameters of the Source and Destination timbres and display/list them in the Program Information and Panel settings tab



## Program Info and Panel Settings

In the **Program Info and Panel Settings** tab, you have access to:

- An information window on the panel version and the changes made in each update
- The panel settings allowing you to change the behavior of the panel but also to load/reset the of User oscillators, delay, reverb and mod FX names
- The Program information display and export allowing you to display information about program(s) and timbre(s) either from the library or as currently loaded in the panel



### Panel settings

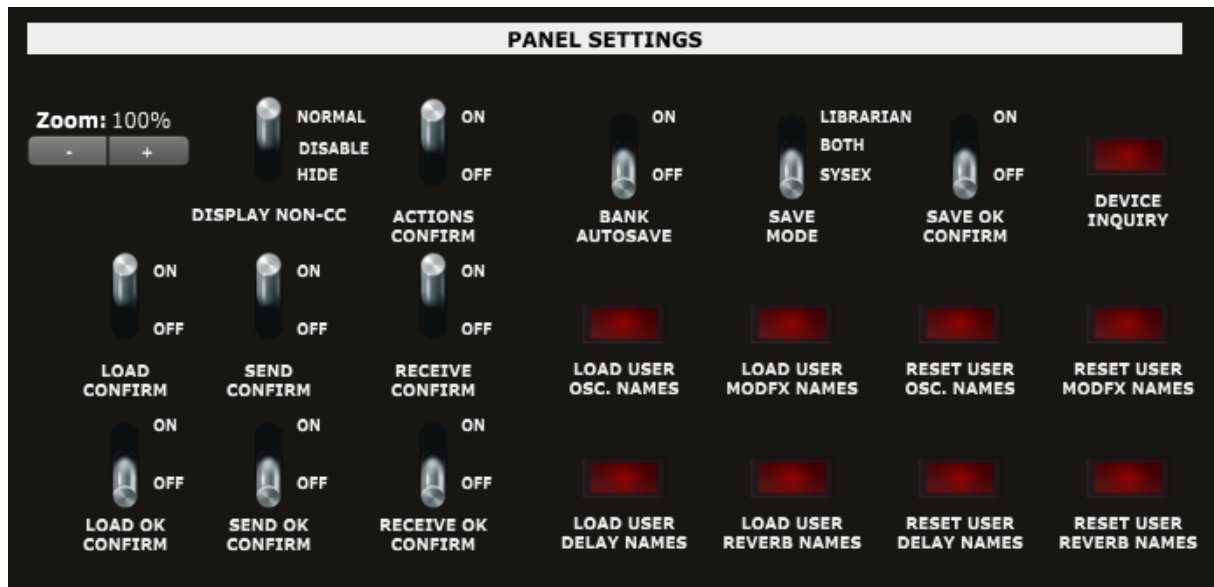
#### Panel zoom

The panel can be zoomed by using the Ctrl + or Ctrl – keys combinations. This is also available from the **View** menu.

Using that method is incrementing/decrementing the zoom factor by 10% steps but the main issue (for some users) is that the zoom factor is not memorized and thus at next usage the zoom is back at 100%.

This is the reason of the implementation of this “manual” zoom. Modifying the zoom factor using those buttons is changing the zoom by 5% steps and will make it keep the zoom factor for next usage.

If you are still modifying the zoom using the View menu or the Ctrl + / Ctrl – keys, no worries! The “manual” zoom is reading the current zoom factor on the panel each time one of the main top panel button is used (Load, Save, Init, Rename).



### Other panel settings

Different switches are giving you the possibility to slightly adapt the behavior of the panel:

- **Display non CC**: as mentioned in the beginning of this manual, some parameters are directly sending CC messages while other ones not (and are thus requiring sending a full program dump to the synth in order to hear the impact of their change). This switch allows you to disable or even hide the non-CC parameters in order to only work with the ones directly impacting the synth.
- **Actions confirm**: in the librarian bank or program operations this switch allows you to have more or less confirmation popups. It is advised to start with this switch on the On position
- **Bank Autosave**: when performing changes in Banks, you can either have the change made directly and automatically in the .syx file or not. If not then you must (and should not forget) save the bank to disk.
- **Save Mode**: sets the type of files that are used to save your programs. You have the choice between sysex, prlgprog Korg Librarian or both formats.
- **Save OK confirm**: This switch allows you to decide if you want to get a confirmation that a Save operation has been done correctly
- **Load confirm**: This switch allows you to decide if you want to confirm a Load operation before it is actually done
- **Load OK confirm**: This switch allows you to decide if you want to get a confirmation that a Load operation has been done correctly
- **Send confirm**: the small Send buttons allow you to quickly send a full program dump to the synth buffer. This switch allows you to decide if a confirmation should be asked before sending. This doesn't apply to the main Send button that will always ask for a confirmation
- **Send OK confirm**: the small Send buttons allow you to quickly send a full program dump to the synth buffer. This switch allows you to decide if you want to get a confirmation that the full dump has been send. This doesn't apply to the main Send button that will always ask for a confirmation
- **Receive confirm**: This switch allows you to decide if you want to confirm a Receive operation before it is actually done
- **Receive OK confirm**: This switch allows you to decide if you want to get a confirmation that a Receive operation has been done correctly

## Device inquiry

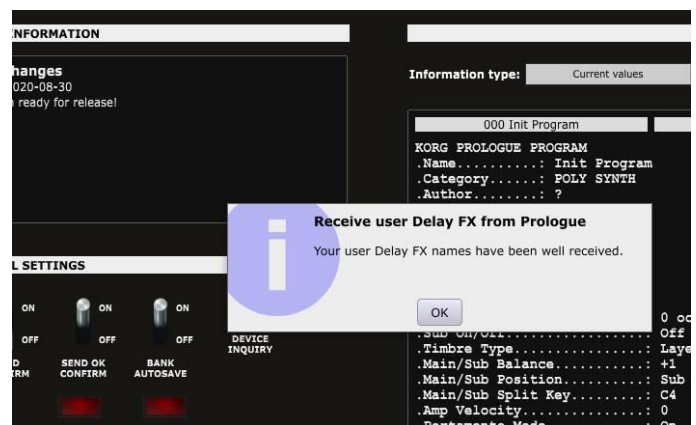
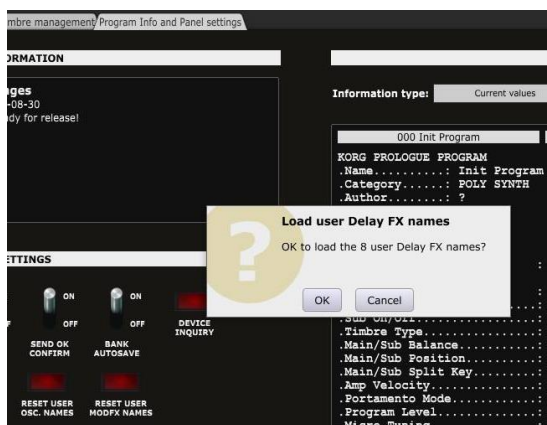
This button allows you to send a Device Inquiry message to the Prologue in order to check if it is well connected. When successful, the Prologue OS version is displayed.

## Load and Reset of User oscillators, delay, reverb and mod FX names

The Prologue offers the possibility to use User oscillators (16), delays (8), reverbs (8) and modulation FX (16). You can decide to keep the current rotary buttons or pulldowns showing a default name as USER1 but you have also the possibility to display the names of your own User oscillators, delays, reverbs and modulation FX which will make your sound design work easier.

Use the four **Load User xxx** buttons to requests the names of those User oscillators, delays, reverbs and modulation FX. The names will be set in the corresponding slots and EMPTYx will be used when a user slot is not yet filled in.

For full flexibility, you can also reset those user names back to their default values by using the **Reset**



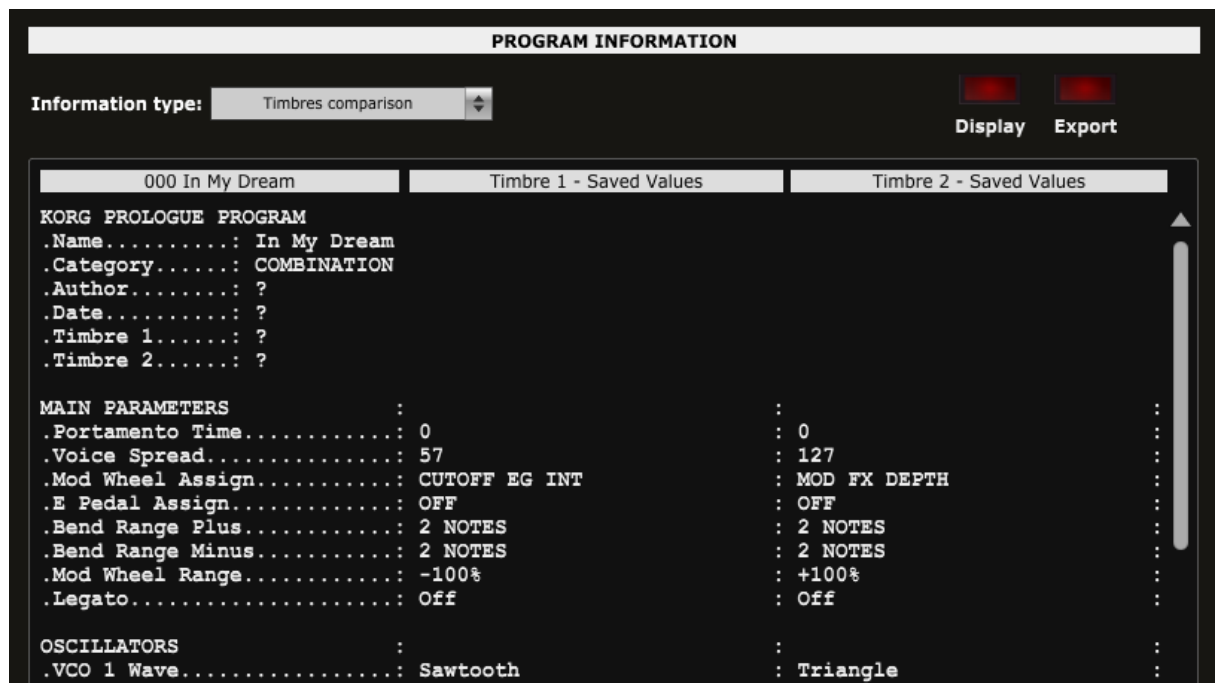
User xxx buttons.

## Display and Export info

On the right side of the Program Info and Panel settings tab, you have access to different lists of Program(s)/Timbre(s) parameters.

The following programs/timbres info operations are available:

- **Current values**: list all current values of the current program
- **Saved values**: list all saved values of the current program
- **Timbre comparison**: list all saved values of the timbres of the current program
- **Full comparison**: list all current and saved values of the current program
- **Differences only**: list only the differences between current and saved values of the current program
- **Full comparison (library)**: list all saved values of the source and destination programs selected in the Bank and Timbre management tab
- **Differences (library)**: list only the differences between the source and destination programs selected in the Bank and Timbre management tab
- **Timbre comparison (library)**: list all saved values of the source and destination timbres selected in the Bank and Timbre management tab



The **Display** button lists the information according to the selection made in the drop-down menu.

The **Export** button first lists the information according to the selection made in the drop-down menu then directly presents a popup window allowing saving the listed information to a text file on the computer.

**PROGRAM INFORMATION**

Information type: Differences only (library) Display Export

Library data differences	D1 P006 Opal Mine	D2 P019 Too the Deep
<b>KORG PROLOGUE PROGRAMS</b>		
.Name.....	Opal Mine	Too the Deep
.Category.....	POLY SYNTH	SFX
.Author.....		
.Date.....		
.Timbre 1.....	Opal Mine_T1	Too the Deep_T1
.Timbre 2.....	-	-
<b>PROGRAM SETTINGS</b>		
.Portamento Mode.....	Auto	On
.Program Level.....	82	97
<b>MODULATION EFFECT</b>		
.Modulation Effect On/Off....	On	Off
.Modulation Effect Type.....	ENSEMBLE	FLANGER
.Modulation Effect Speed.....	355	757
.Modulation Effect Depth....	602	815
<b>SPATIAL EFFECT</b>		
.Delay/Reverb On/Off.....	Off	On
.Delay/Reverb Time.....	787	754
.Delay/Reverb Depth.....	76.4%	72.4%
<b>ARPEGGIATOR</b>		
.Arp Type.....	MANUAL	POLY RANDOM
.Arp Tempo.....	150bpm	99bpm
<b>MAIN PARAMETERS</b>		
.Voice Spread.....	45	127
.Mod Wheel Assign.....	VCO2 PITCH	A.EG DECAY
.E Pedal Assign.....	OFF	V.SPREAD
.Mod Wheel Range.....	+70%	+80%
<b>OSCILLATORS</b>		
.VCO 1 Octave.....	8	2

At this stage, some parameters are not listed:

- Multi Engine sub Type
- Multi Engine Shape
- Multi Engine Shift shape
- Mod Effect Type
- Midi Aftertouch
- Delay/Reverb
- Delay Reverb Type



## Installing and using the Prologue panel as plugin

First of all, thanks to all people that have made some tests and provided feedback from using the plugin with their DAW.

**It is generally better to use the panel in standalone mode and not in VST.** VST usage is of course interesting when you want to do some parameter automations or to save the patch setup for the corresponding track (this is saved together with the project). As all DAWs have a different way to handle VST's and this is also depending on your Midi interface setup, it is difficult to describe the setups and identify solutions for all the possible problems.

The following paragraphs will provide info on how to install the plugin version of the panel but also describe the way to use it and the known limitations for each DAW.



Don't hesitate to send a mail to [sunny.synths@gmail.com](mailto:sunny.synths@gmail.com) if you see errors or identify ways of doing things in your DAWs. They will be mentioned in the next version of the manual.

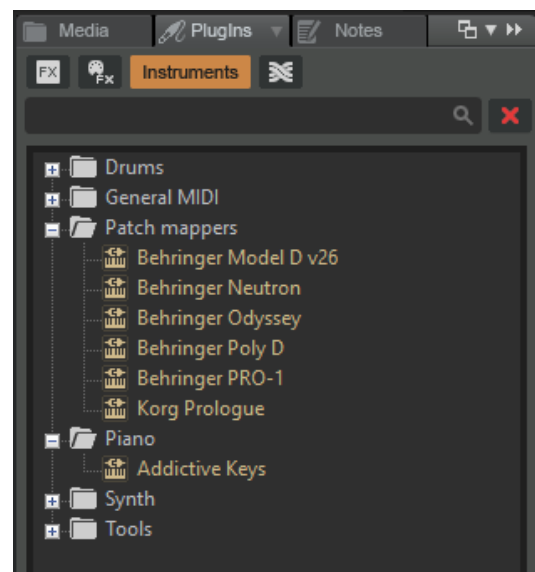
### Installation

On Windows PC, depending on your DAW version and after unzipping the main file, either copy the **Korg Prologue.dll** file from the Windows VST 64 bits directory to your 64 bits plugins directory and/or the **Korg Prologue.dll** file from the Windows VST 32 bits directory to your 32 bits plugins directory (Steinberg hosts often use C:\Program Files\Steinberg\VSTplugins as the default plugin path).

On Mac OS, unzip then copy the **Korg Prologue.vst** file from the MacOS VST directory to your VST plugin directory (/Library/Audio/Plug-ins/VST) and copy **Korg Prologue.component** file from the MacOS AU directory to your plugin directory (/Library/Audio/Plug-ins/Component). You will most probably need administrator rights to perform those copies.

Start your DAW and check that the plugin directory is rescanned and that the **Korg Prologue** panel is visible in your list of plugins.

Here is an example in Cakewalk (a light blue scanning popup is displayed as soon as a file is added or modified in the identified 64 bits VST plugins folder):



## Midi setup when using the panel as plugin

There are 2 ways to setup a panel in your DAW:

- In a similar way as for the standalone version by allocating fixed Midi channels to the input and output
- Passing by your DAW that is setting the Midi channels



As mentioned earlier, the setup of the plugin will be different according to your DAW and your hardware setup and thus this is only giving you a place to search and experiment rather than precise indications. Sorry for that.

In most DAW, you must also arm your track and enable monitoring.

### Option 1: setup as in standalone mode

- In the **Midi** menu, select **Input – Device** *Prologue KBD/KNOB*
- In the **Midi** menu, select **Input – Channel 0** (this is set to channel 0 = All channel because it is needed to receive from both the main timbre and the sub timbre)
- In the **Midi** menu, check that **Controller – Device** is set to *None*
- In the **Midi** menu, select **Output – Device** *Prologue SOUND*
- In the **Midi** menu, select **Output – Channel 1** (set this to the Midi Global channel of your Prologue).
- In the **Midi Thru** menu, at least set **Plugin host -> Output device**. This is allowing the DAW to reach the output device (the prologue in that case) for playing notes

Depending on the DAW and as both the DAW and the panel plugin can use the same Midi port you will most probably be obliged to disable the corresponding Midi In and Out channels in your DAW.

This setup is thus in some way rigid because channels are dedicated BUT may be mandatory if your DAW do not let the sysex pass as in Ableton.

### Option 2: “hybrid” way with Input able to do multi-port; Output managed by the DAW

- In the **Midi** menu, select **Input – Device** *Prologue KBD/KNOB*
- In the **Midi** menu, select **Input – Channel 0** (this is set to channel 0 = All channel because it is needed to receive from both the main timbre and the sub timbre)
- In the **Midi** menu, under **Plugin Options**, select **Output to plugin host**
- In the **Midi Thru** menu, at least set **Plugin host -> Plugin host**

This option may not work for all DAWs.

## Tests and identified limitations

Different DAWs have been tested and some way of working presented here.

### The following actions are checked:

- Creating a track using the plugin
- Displaying the instrument and checking all controls are working fine including Load/Save...
- Saving and opening a project in the DAW. This is checking that the last patch saved is restored correctly. As in standalone mode, the last patch used is restored (not the last position of the knobs!)
- Creating a second track with the plugin
- Saving and opening a project in the DAW. This is checking that there can be different tracks using the plugin with each of their last patch saved restored correctly.
- Creating a preset in the DAW. Each DAW has different ways to do this. Creating presets can also be done by saving full channel strips that are including the VST instrument setup (Cakewalk, Reaper, Logic)
- Creating a track by selecting a DAW preset instead of selecting the plugin. Checks if the correct patch is restored. When working, this is done by loading a saved channel strip.
- Replacing a DAW preset by another DAW preset



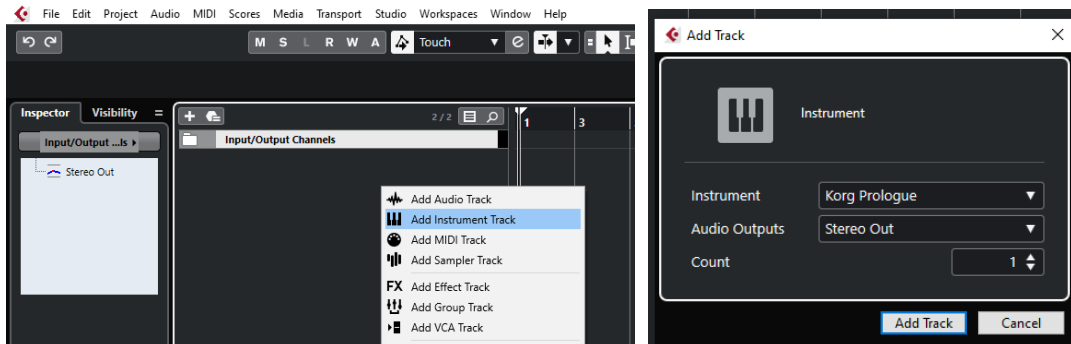
Replacing the DAW preset in a track by another DAW preset is working but it is still better to use the LOAD and SAVE buttons from the Prologue panel itself as the displays in the panel will not show the correct preset name and file even if all buttons will be positioned correctly.

	Cubase	Cakewalk	Reaper	Ableton	Studio 1	Logic
Create track	✓	✓	✓	✓	✓	✓
Using the plugin	✓	✓	✓	✓	✓	✓
Save and restore project in DAW	✓	✓	✓	✓	✓	✓
Save and restore project with 2 tracks	✓	✓	✓	✗	✓	✓
Create DAW preset	✓	✓	✓	✓	✓	✓
Create track based on DAW preset (saved channel strip)	✓	✓	✓	✗	✓	✓
Replace DAW preset by another DAW preset	⚡	⚡	✓	⚡	⚡	✓

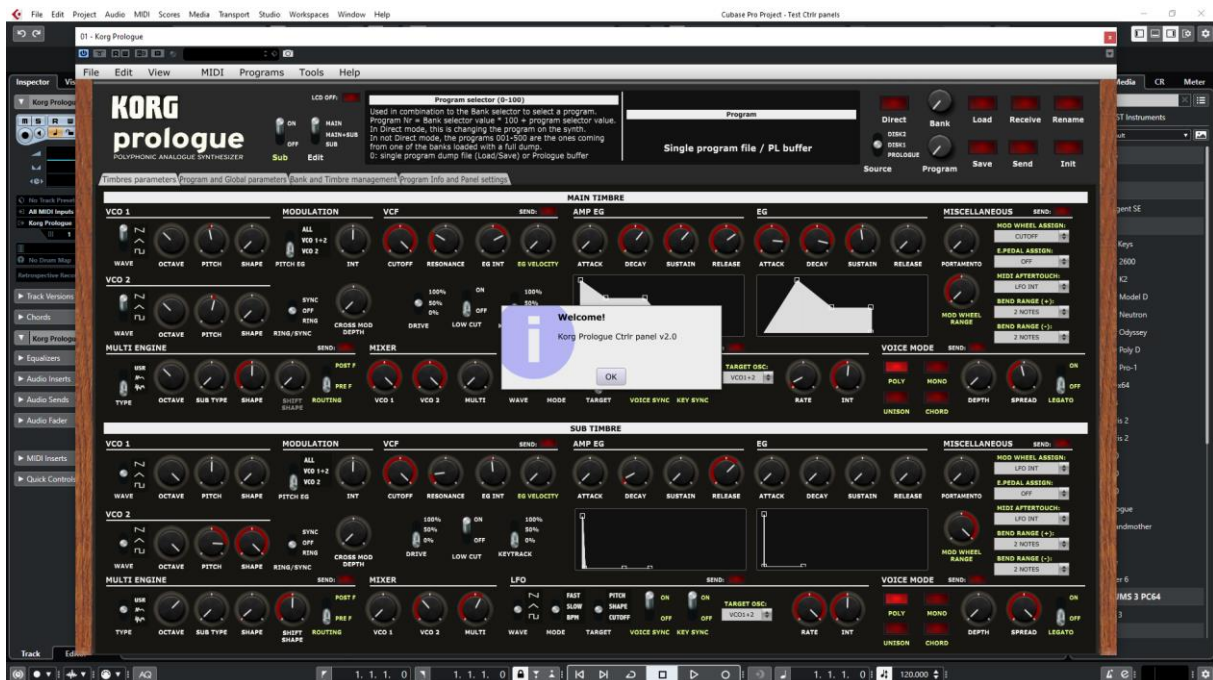
## Cubase

### Creating a new track

Add an Instrument track by using the Add track menu displayed when right clicking in the middle of the workspace then select the Korg Prologue VST. Click on the [Instrument button](#) to display the panel and use it as you would do for the standalone version.



...or by dragging and dropping from the VSTi panel (easier).



When saving the Cubase project, the panel is saved as well. It will be restored in the same state (zoom factor, loaded banks if not moved, buttons positions and loaded patch).

## Using several Prologue tracks at once

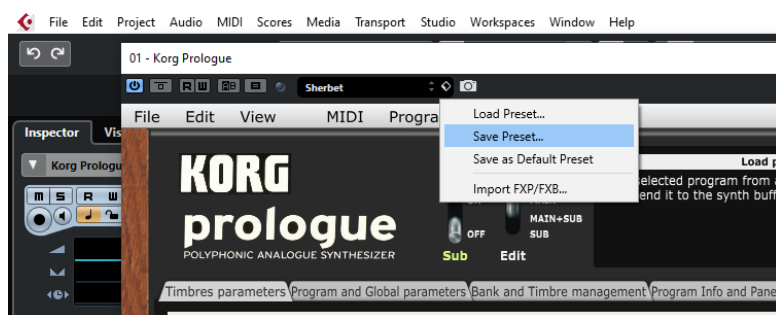
You can associate the panel to several tracks in order to keep track of the different patches used for them



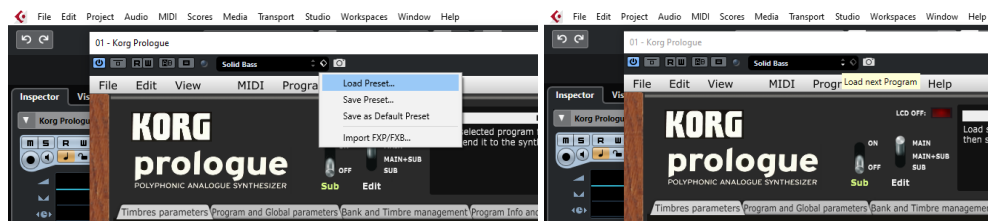
## Saving a patch as a Cubase preset

You should save your patches using the Save button **inside** the panel but in addition to that you can also save them as *Cubase preset* or *Cubase track preset*.

To save as Cubase preset, click on the small diamond to the left of the small camera icon at the top of the plugin window, select **Save preset...** then give a name to your preset.

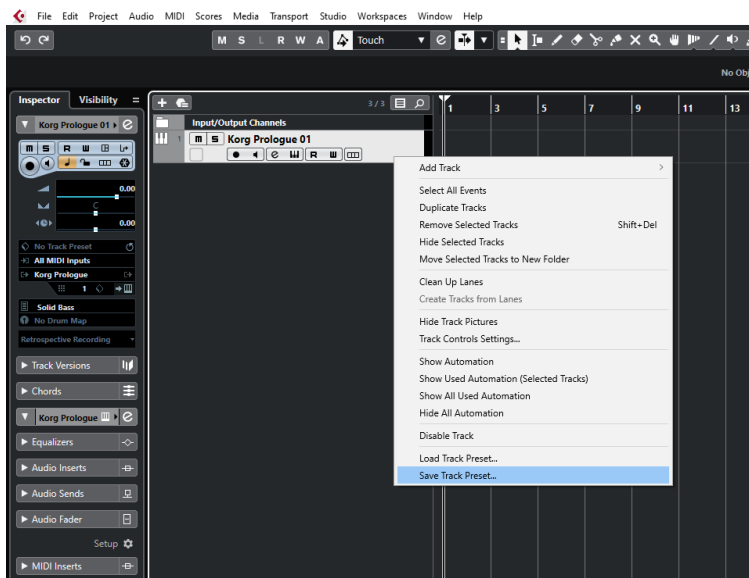


Later on, you can load a preset by using **Load preset** from the same menu or you can navigate through your presets by using the small up and downs triangle buttons.

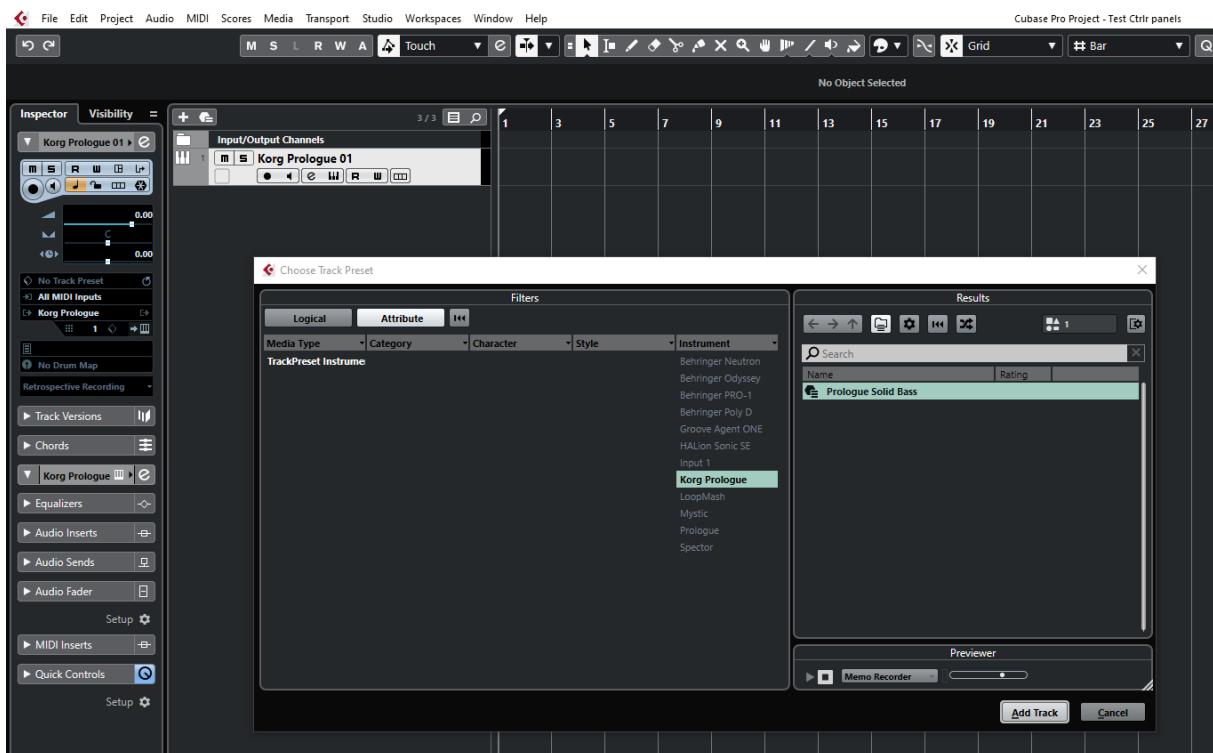




To save as Cubase track preset, select [Save track preset](#) when right clicking on a track.

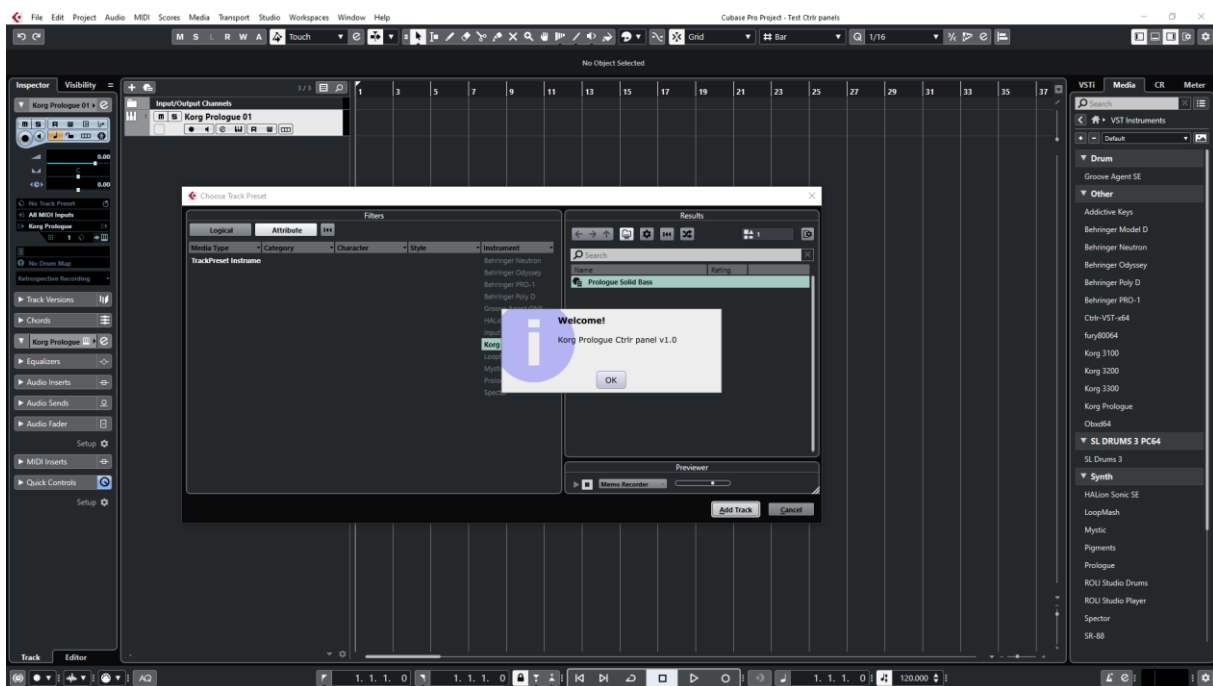
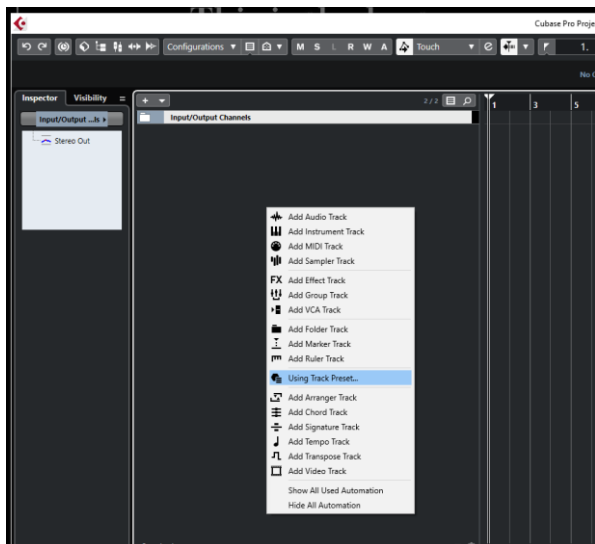


Later on, the content of the panel as is can be restored directly in a new empty track without the need of a Load from the panel by selecting [Load track preset](#) when right clicking on a track.



### Creating a new track from a Cubase preset

When creating a new track you can directly pick [Using track preset](#) from the menu. The patch will appear in the panel on a new track without the need of a using Load from the panel



### Replacing the preset on an existing track by another preset

Works fine. Just select another previously saved preset at the top left of the plugin window. All buttons will be positioned according to the newly loaded presets.

You can also scroll through the presets with the small up/down buttons.



At this stage, it is still better to use the LOAD and SAVE buttons from the Prologue panel itself as the displays in the panel will not show the correct preset name and file even if all buttons will be positioned correctly.

## Cakewalk by Bandlab

### Creating a new track

Drag the Prologue plugin from the Instruments plugin window (Synths) and drop it on the main window to create a new track.

Click on the instrument icon near the track name to display the panel.



Load a preset from inside the panel and use it as you would do for the standalone version.

When saving the Cakewalk project, the panel is saved as well. It will be restored in the same state (zoom factor, loaded banks if not moved, buttons positions and loaded patch).

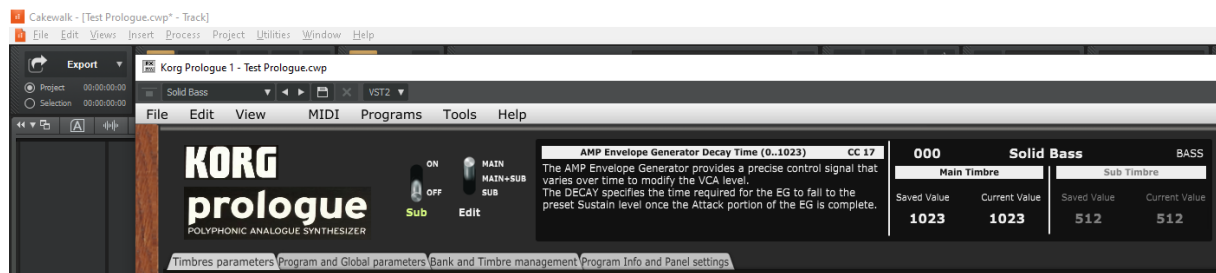
### Using several Prologue tracks at once

Works fine. To keep several plugin windows opened at once you need to pin them first (pin icon on top right of a plugin window). Patches and windows are restored when re-opening the project.



## Saving a patch as a Cakewalk preset

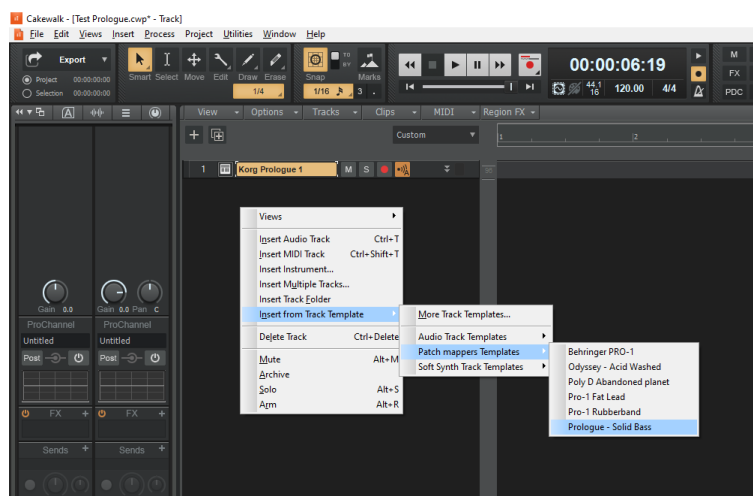
It is possible to save the current patch as a Cakewalk preset by changing the name at the top of the plugin window (here “Solid Bass”) then clicking on the Save button.



## Creating a new track from a Cakewalk preset

Not found... It seems it is always needed to first create a track with the instrument plugin and then to select a preset (but this doesn't work – see next paragraph).

Another possibility would be to save each preset as a separate track template then to create the track from those track template “presets”.



## Replacing the preset on an existing track by another preset

Works fine. Just select another previously saved preset at the top left of the plugin window. All buttons will be positioned according to the newly loaded presets.



At this stage, it is still better to use the LOAD and SAVE buttons from the Prologue panel itself as the displays in the panel will not show the correct preset name and file even if all buttons will be positioned correctly.

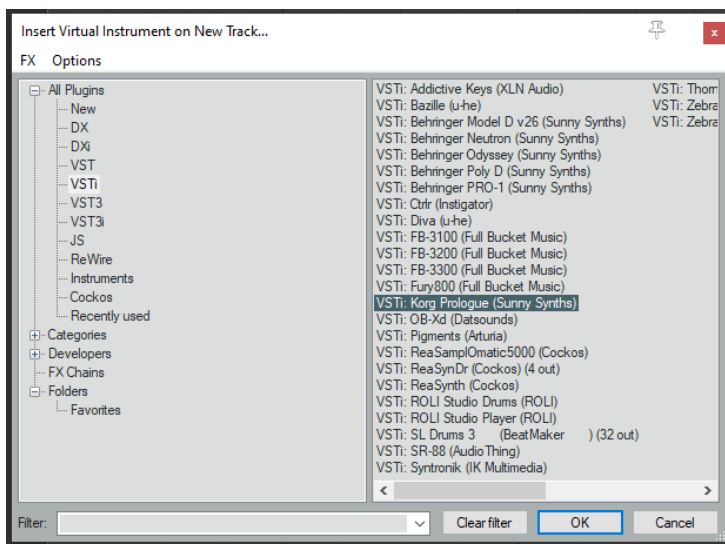


## Reaper

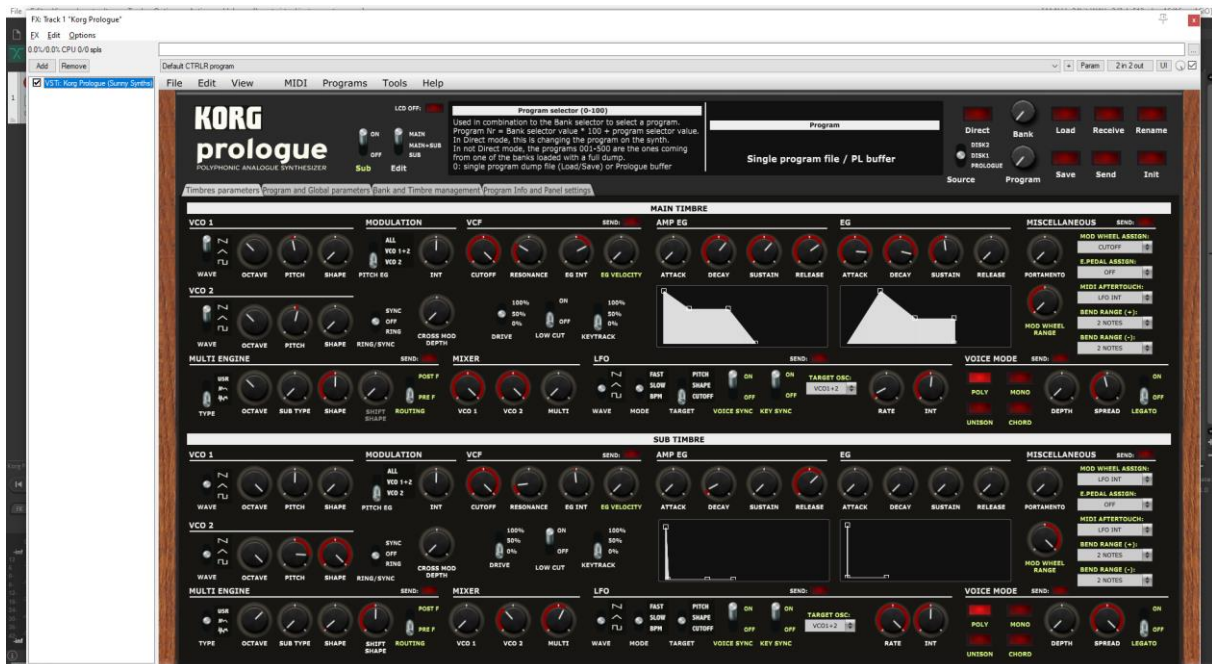
Reaper is available on Windows and MacOS. On MacOS, Reaper is supporting both VST and AU plugin versions.

### Creating a new track

Select [Insert virtual instrument on new track](#) in the Track menu then select the Korg Prologue VST from the VSTi category



Click on the [FX button](#) to display the panel and use it as you would do for the standalone version (right-clicking instead of direct click gives only the plugin window without the blank side area)



When saving the Reaper project, the panel is saved as well. It will be restored in the same state (zoom factor, loaded banks if not moved, buttons positions and loaded patch).

## Using several Prologue tracks at once

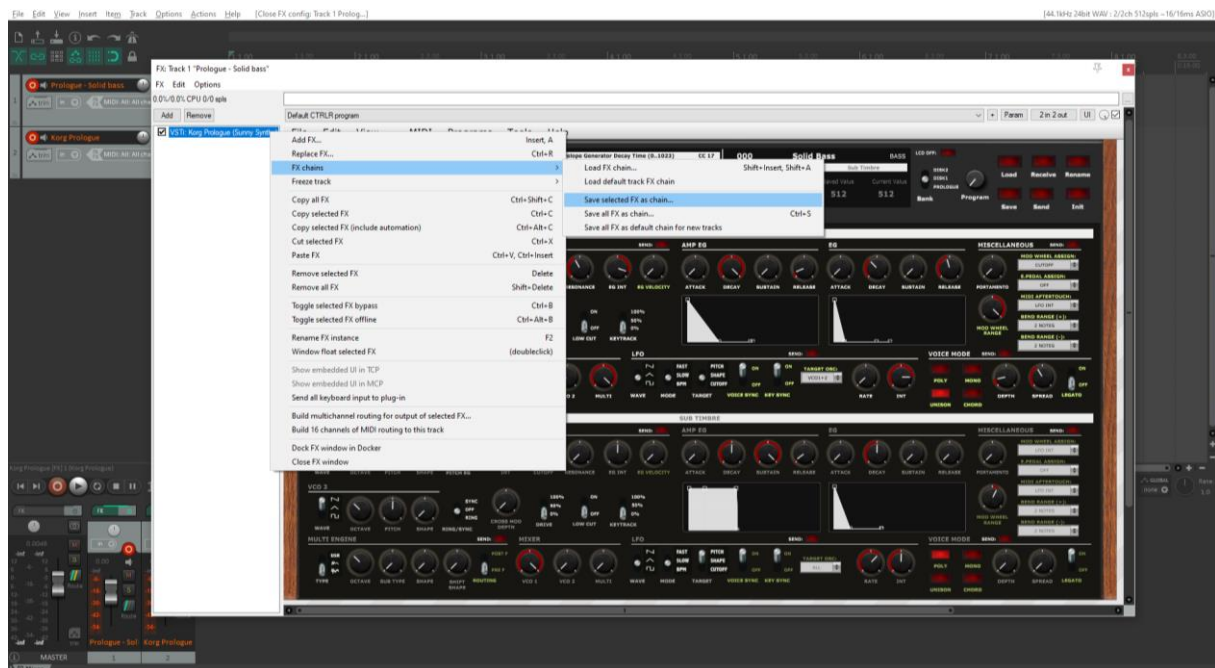
Works fine:

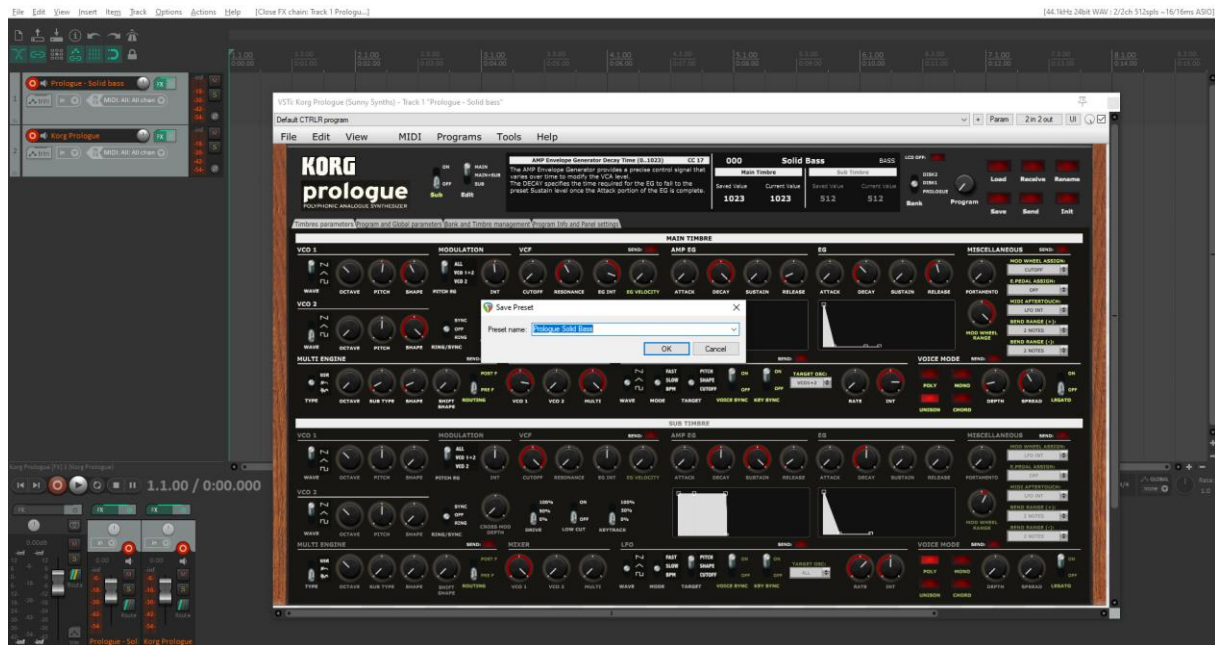


## Saving a patch as a Reaper preset

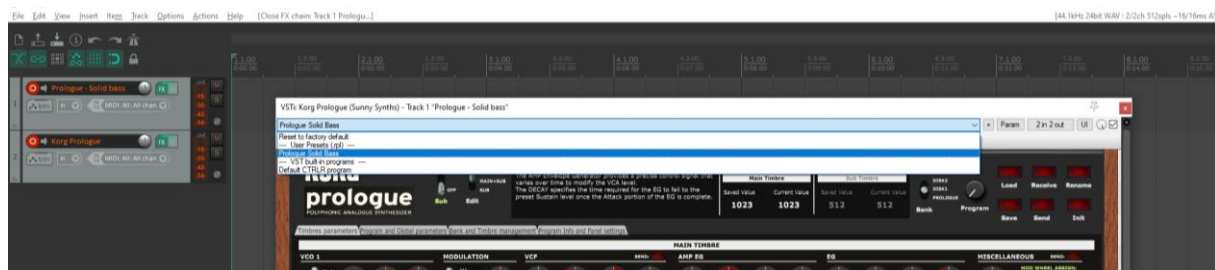
Two different methods are possible:

- Save FX chain – Right click on VST name in white area of plugin window then select **FX chain**
- Save preset - Click on the **+** button in the plugin window then name the preset





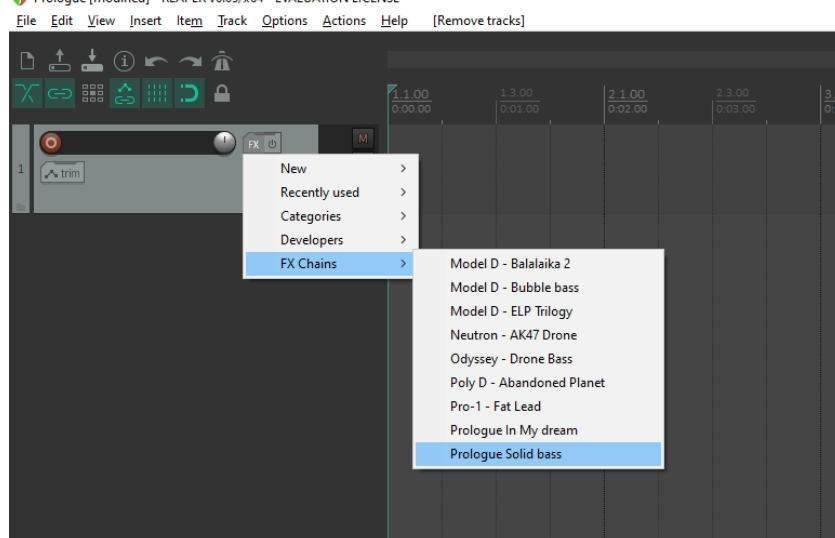
Presets are appearing under User presets



## Creating a new track from a Reaper FX chain preset

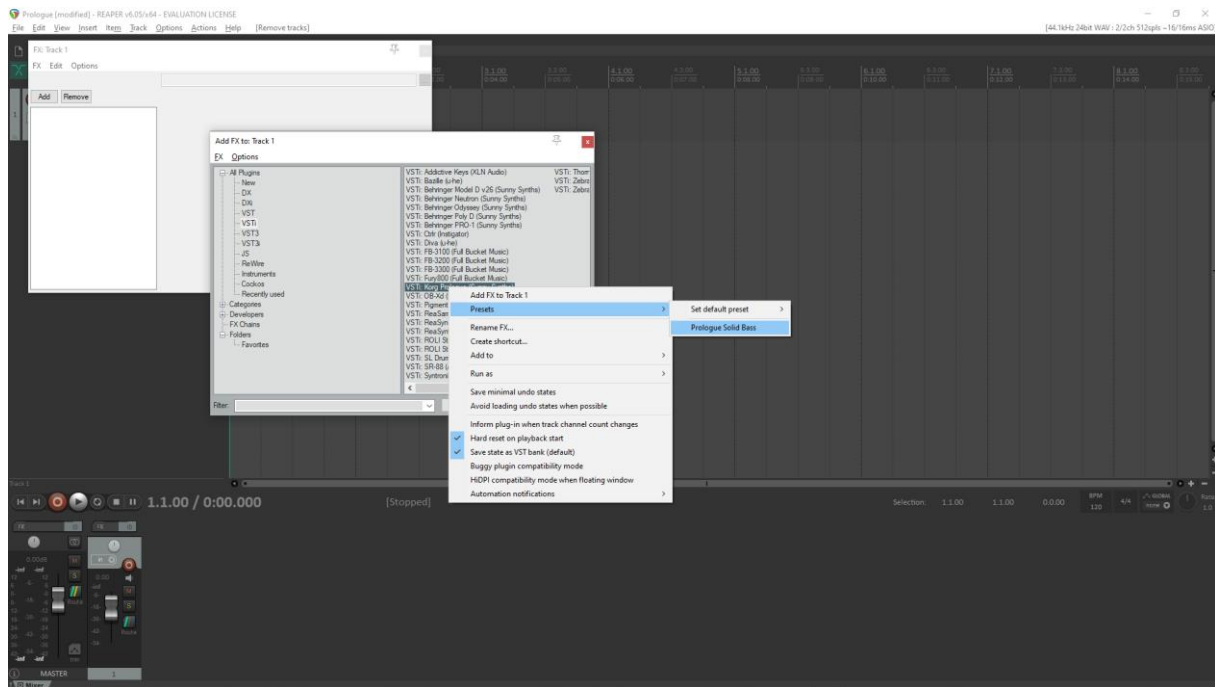
Create an empty track then right click on grey **FX** button to select a saved FX chain

Prologue [modified] - REAPER v6.05/x64 - EVALUATION LICENSE



### Creating a new track from a Reaper preset

This is not possible directly but well in two steps. First, create an empty track then click on grey **FX** button to display the Track FX window with the VST plugins list. Then, right click on the Prologue plugin and select a saved preset under **Presets**



### Replacing the preset on an existing track by another preset

Click on the green **FX** button then in the FX track window, select the FX and press the **Remove** button.

Add the new one as described above.



## Ableton

**Status:** This has been tested in Ableton Live Lite 10 and it is thus expected to work fine in the full versions.

### Creating a new track

Drag the Prologue plugin from the plugin browser and drop it on the main window to create a new track.

The panel should open automatically. If not, click on the small wrench icon in the small window at the bottom.

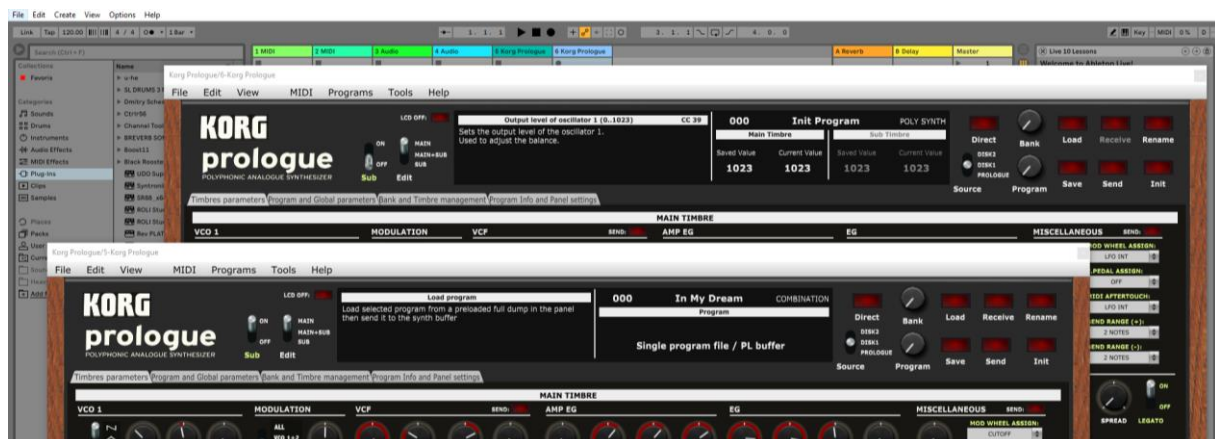


Load a preset from inside the panel and use it as you would do for the standalone version.

When saving the Ableton project, the panel is saved as well. It will be restored in the same state (zoom factor, loaded banks if not moved, buttons positions and loaded patch).

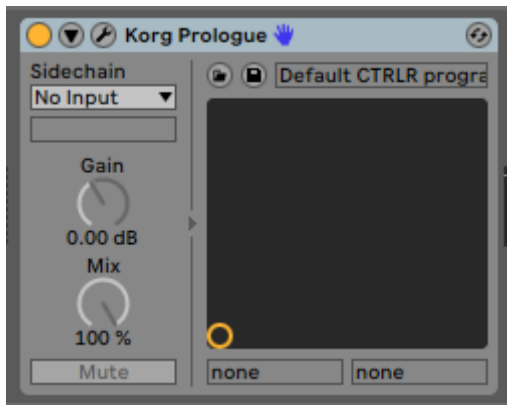
### Using several Prologue tracks at once

Works fine. To keep several plugin windows opened at once you need to change the masking of plugin setup in Preferences. Patches and windows are restored when re-opening the project.



### Saving a patch as an Ableton preset

It is possible to save the current patch as an Ableton **.fxp** preset by clicking on the [Save](#) button in the small instrument window at the bottom.



### Creating a new track from an Ableton preset

Not found... It seems it is always needed to first create a track with the instrument plugin and then to select a preset as described in next paragraph.

### Replacing the preset on an existing track by another preset

Works fine. Just select another previously saved preset at the top left of the plugin window. All buttons will be positioned according to the newly loaded presets.



At this stage, it is still better to use the LOAD and SAVE buttons from the Prologue panel itself as the displays in the panel will not show the correct preset name and file even if all buttons will be positioned correctly.



## Studio One

**Status:** This has been tested in Studio One 3.5 32 bits and 4.6 64 bits version. The panel doesn't work fine in the 32 bits version (due to the packing/unpacking functions – let me know if you need it).

### Creating a new track

Drag the Prologue plugin from the plugin browser and drop it on the main window to create a new track.

The panel should open automatically. If not, click on the small Instrument editor icon on the right side of the track name.

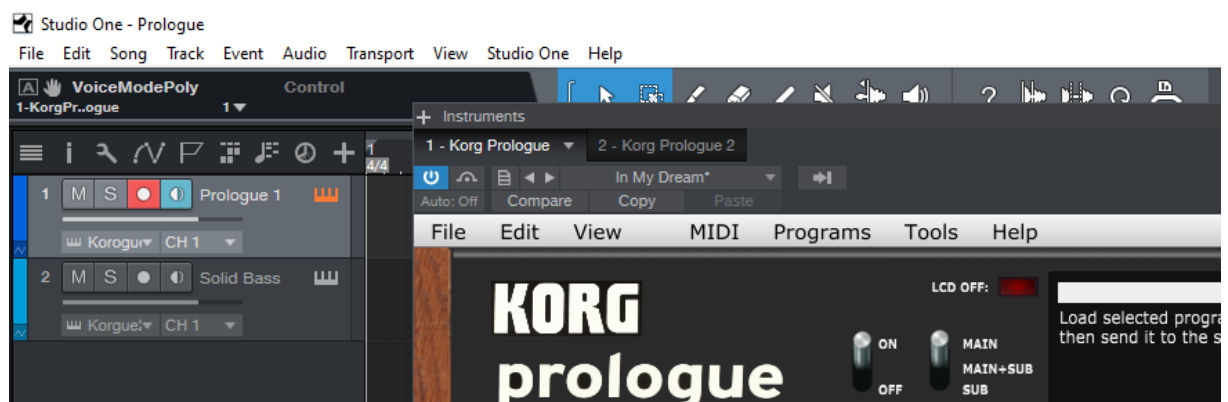


Load a preset from inside the panel and use it as you would do for the standalone version.

When saving the Studio One song, the panel is saved as well. It will be restored in the same state (zoom factor, loaded banks if not moved, buttons positions and loaded patch).

### Using several Prologue tracks at once

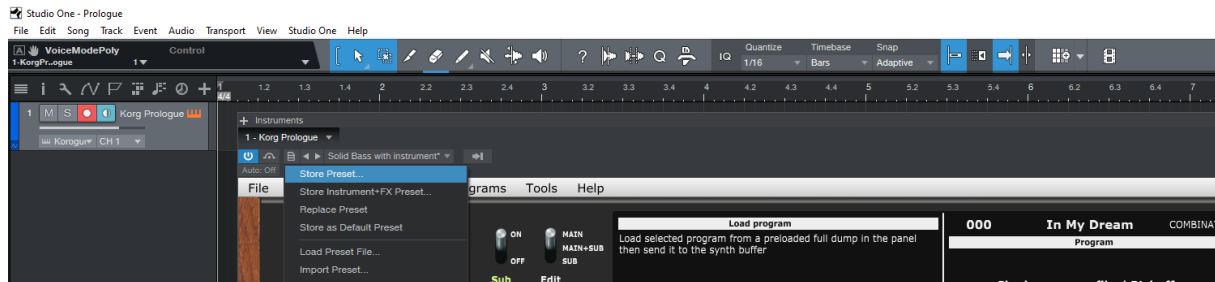
Works fine. The instrument editor is showing one tab by track:



Re-opening a project saved with several Prologue tracks is working fine.

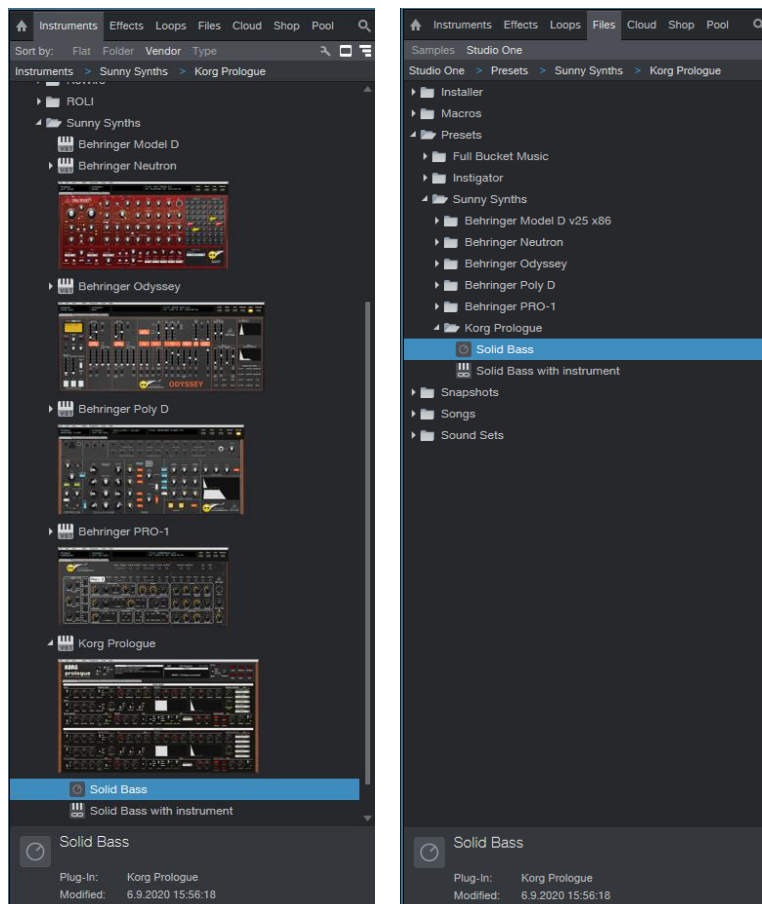
## Saving a patch as a Studio One preset

You can save the last patch saved in the panel as a preset in Studio One by selecting **Store preset** in the plugin window preset menu. In the popup menu, input the name of a Subfolder corresponding for example to the sound category.



## Creating a new track from a Studio One preset

The presets and their subfolders created with the above method are appearing directly in the browser under the Prologue VST name in the Instruments tab or in the Files tab



## Replacing the preset on an existing track by another preset

Works fine. Just select another previously saved preset at the top left of the plugin window. All buttons will be positioned according to the newly loaded presets.



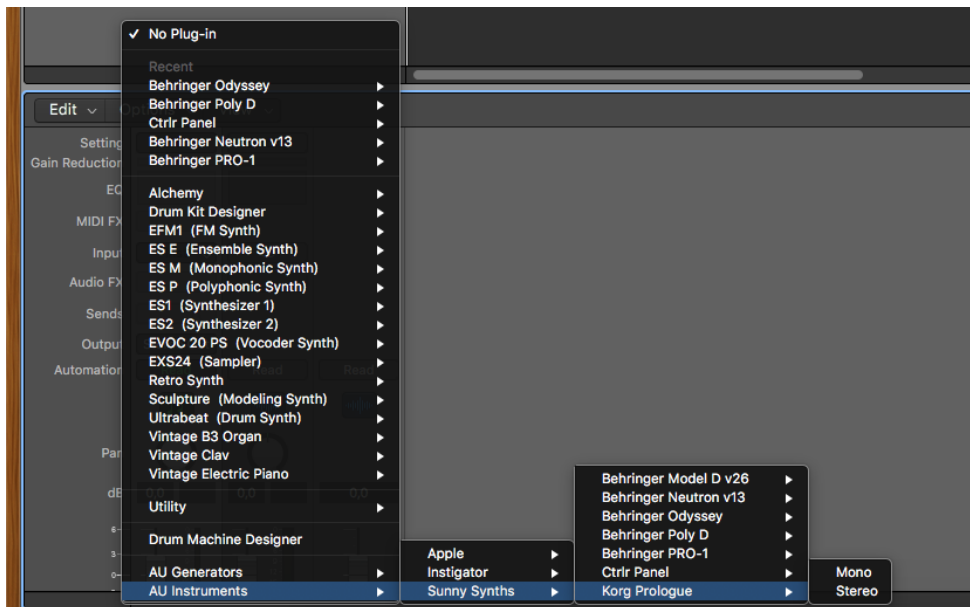
At this stage, it is still better to use the LOAD and SAVE buttons from the Prologue panel itself as the displays in the panel will not show the correct preset name and file even if all buttons will be positioned correctly.

## Logic Pro X

Logic Pro X is only available on MacOS and handles only the AU plugin version so you must secure to have the Korg Prologue.component plugin file in your AU plugin directory.

### Creating a new first track

Create a new instrument track and select the Korg Prologue plugin for it (under AU instruments) by clicking on the small Instrument editor icon on the right side of the track Input.



Click in the middle of the track Input to open the panel.



Load a preset from inside the panel and use it as you would do for the standalone version.

When saving the Logic project, the panel is saved as well. It will be restored in the same state (zoom factor, loaded banks if not moved, buttons positions and loaded patch).

## Using several Prologue tracks at once

Works fine since v2.0 and can be done by simply creating two tracks with the plugin.



If wished, one can also create a channel strip:

- Save the Init patch as a channel strip preset in Logic by clicking on the [Setting](#) button at the top of the channel strip in the mixer and selecting [Save Channel Strip Setting as...](#)



- New tracks can be created based on that Init channel strip (see after) and can then be changed afterwards to other patches with the Load button

## Saving a patch as a Prologue Logic preset

You can save the last patch saved in the panel as a plugin preset in Logic by selecting **Save As** in the pulldown menu of the preset area at the top of the plugin window. An .aupreset file will be created.



**Saving a patch as a Prologue Logic channel strip preset**

You can save the last patch saved in the panel as a channel strip preset in Logic by clicking on the Setting button at the top of the channel strip in the mixer and selecting Save Channel Strip Setting as.... Note that this is different than saving a plugin preset.

**Creating a new track from a Logic channel strip setting**

This is not possible directly but well in two steps. First, create a new Software Instrument track then click on the Setting button at the top of the channel strip in the mixer and select a previously saved channel strip setting.

**Replacing the preset on an existing track by another preset**

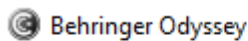
This is working well with Channel Strips Settings.

This is also now working fine with saved presets since version 2.0. Just select another previously saved preset at the top left of the plugin window. All buttons will be positioned according to the newly loaded presets.



At this stage, it is still better to use the LOAD and SAVE buttons from the Prologue panel itself as the displays in the panel will not show the correct preset name and file even if all buttons will be positioned correctly.

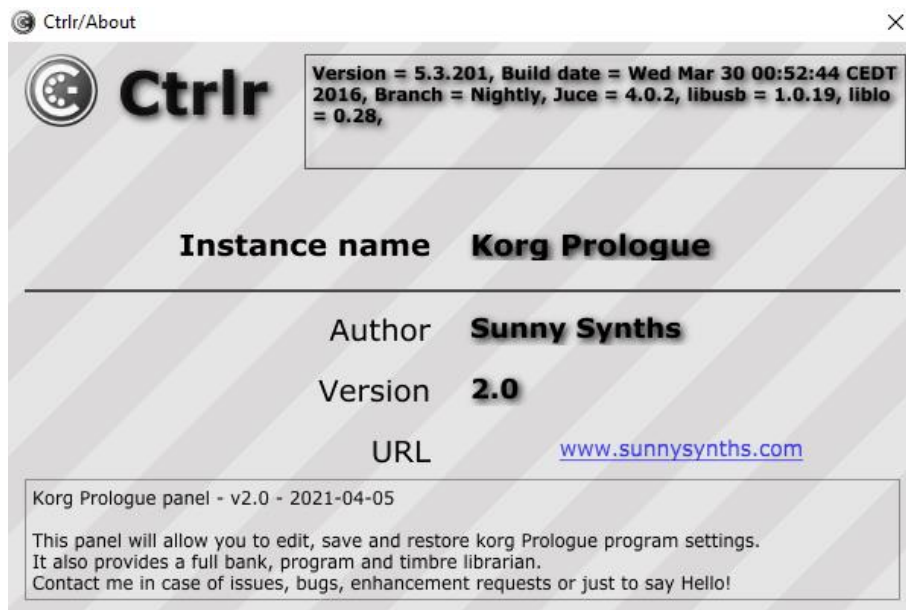
## The main Ctrlr menus



Actually, not so much is used from the Ctrlr menus...

What you can use is:

- **File** menu: Quit is the only option
- **View** menu: allows zooming the panel in and out by 10% steps
- **Midi** menu: to select your Prologue as Output Midi device and to set its Midi channel; to set the Midi Thru (Input->Output)...
- **Tools** menu: use the Midi monitor popup to verify the messages between the panel and the synth
- **Help** menu: displays the About info of the panel





## Appendix

### Version history

Date	Version	Description	By
2020-09-09	1.0	First version of this manual	Sunny Synths
2020-10-04	1.1	Added Receive bank from Prologue, Load and Save Minilogue XD programs	Sunny Synths
2021-04-05	2.0	Added Load of Korg Librarian files. All DAW plugin section revised due to the correction of the multiple popup issue	Sunny Synths

### Prologue information

The Korg Prologue product page: <https://www.korg.com/us/products/synthesizers/prologue/>

### Using Midi-OX to download your Prologue content

If needed, on Windows, you can use Midi-OX to download all the 500 presets from your Prologue and load them as a bank in the panel. On MacOS, the equivalent is Sysex Librarian.

Step by step:

- Download Midi OX from <http://www.midiox.com/>
- Open Midi OX and define your Prologue as Input and Output device by selecting **Options – Midi Devices** in the menu
- Click on the 3<sup>rd</sup> icon or select **View – Sysex** to open the sysex window
- In the sysex window, select **Sysex- Receive Manual dump**. This will initiate a waiting popup so we can get our full dump from the Prologue
- On the Prologue, perform an “ALL DUMP” by going to Function mode and pressing button 8 (see Prologue manual on p53)
- When received, this is appearing in the lower part of the sysex window in Midi OX (Display Window). Select **Display window – Save as** to save the received data (around 200000 bytes) into a sysex file like *my\_prologue\_data.syx*
- Close Midi OX
- In the panel, go to the **Bank and Timbres management** tab, select a bank and load it as described in p26

